



US 20150240312A1

(19) **United States**

(12) **Patent Application Publication**

Ellis et al.

(10) **Pub. No.: US 2015/0240312 A1**

(43) **Pub. Date: Aug. 27, 2015**

(54) **COPY NUMBER ABERRATION DRIVEN ENDOCRINE RESPONSE GENE SIGNATURE**

G06F 19/20 (2006.01)
G06F 19/24 (2006.01)
B01J 19/00 (2006.01)

(71) Applicant: **Washington University, Saint Louis, MO (US)**

(52) **U.S. Cl.**
CPC *C12Q 1/6886* (2013.01); *G06F 19/24* (2013.01); *B01J 19/0046* (2013.01); *G06F 19/20* (2013.01); *G06F 19/345* (2013.01); *C12Q 2600/112* (2013.01); *C12Q 2600/16* (2013.01); *C12Q 2600/158* (2013.01)

(72) Inventors: **Matthew Ellis, Houston, TX (US); Jingqin Luo, Saint Louis, MO (US)**

(21) Appl. No.: **14/407,913**

(22) PCT Filed: **Jun. 12, 2013**

(57) **ABSTRACT**

(86) PCT No.: **PCT/US2013/045525**

§ 371 (c)(1),

(2) Date: **Dec. 12, 2014**

Related U.S. Application Data

(60) Provisional application No. 61/658,517, filed on Jun. 12, 2012.

Publication Classification

(51) **Int. Cl.**
C12Q 1/68 (2006.01)
G06F 19/00 (2006.01)

Disclosed are methods of predicting the likelihood of long-term survival without recurrence of breast cancer for a subject having estrogen receptor-positive (ER+) breast cancer treated with adjuvant endocrine monotherapy. In various embodiments, these methods comprise performing a gene expression profile of a breast tissue sample of substantially all of the genes of the "CADER set" described herein; calculating a risk score using a regression model; and applying a double median cutoff classification to assign the subject to a sensitive, indeterminate or resistant group, wherein assignment to a sensitive group predicts longer relapse-free survival compared to the median relapse-free survival of ER+ breast cancer patients treated with adjuvant endocrine monotherapy.

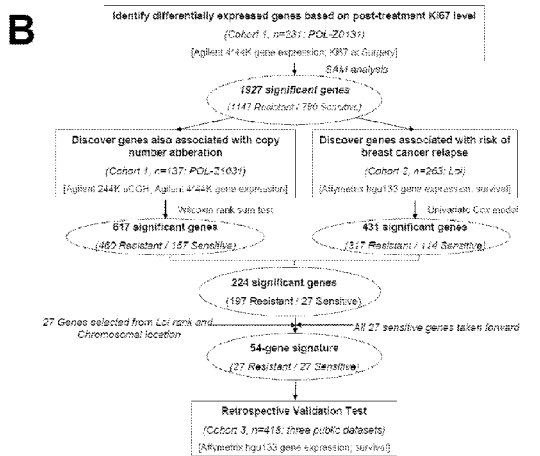
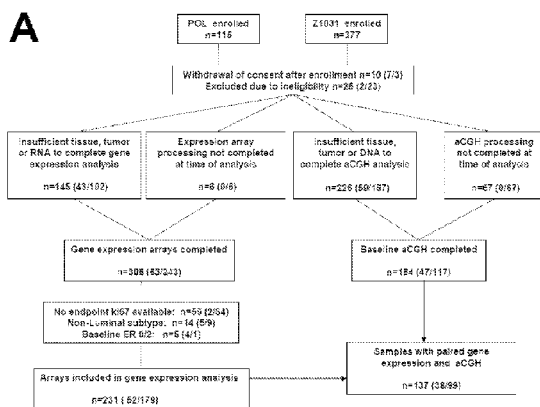


FIG. 1

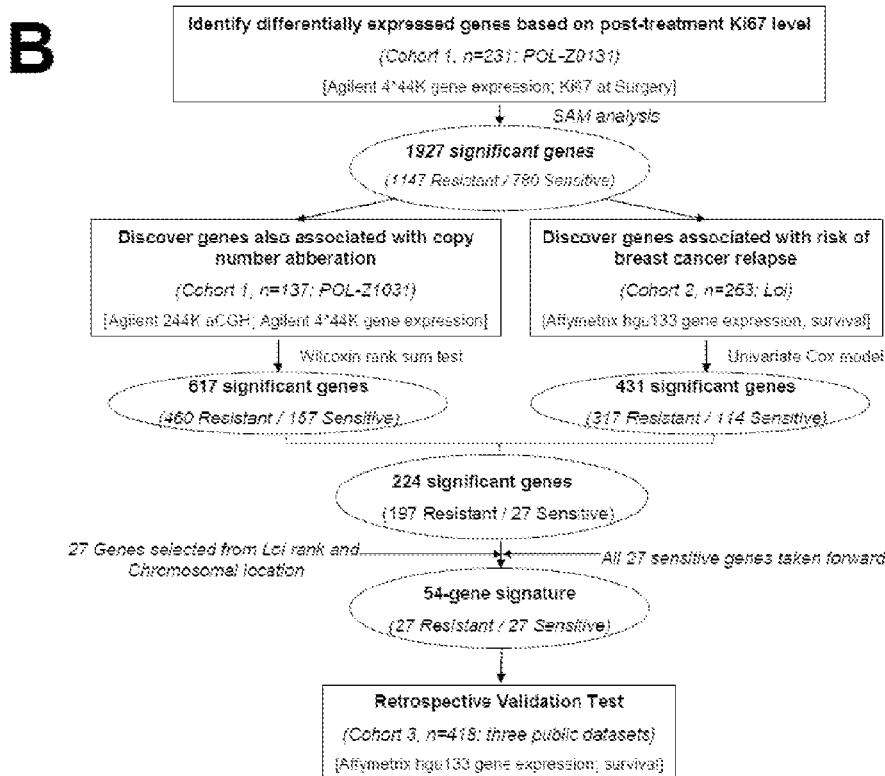
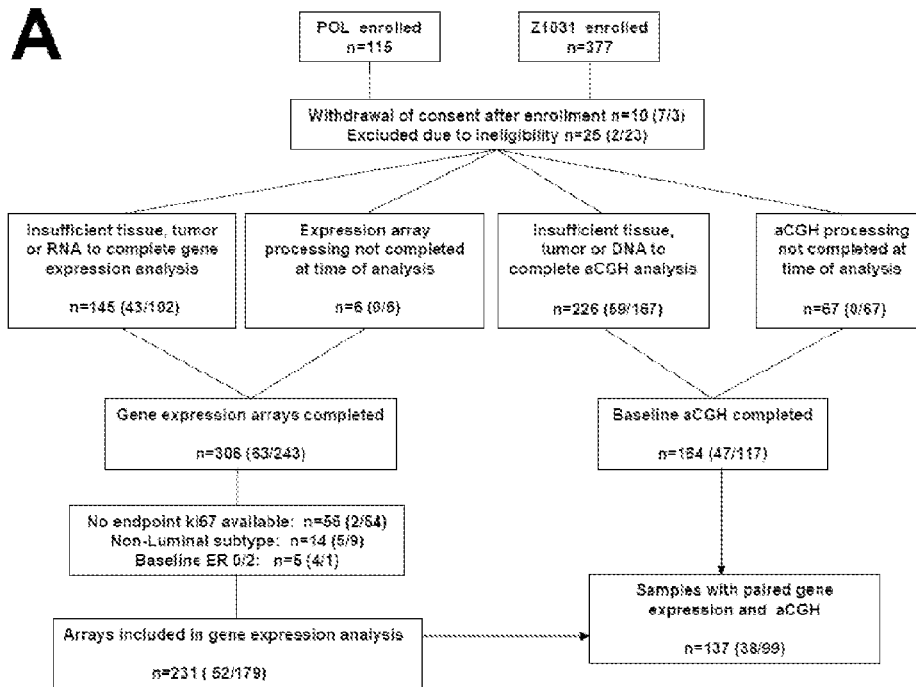
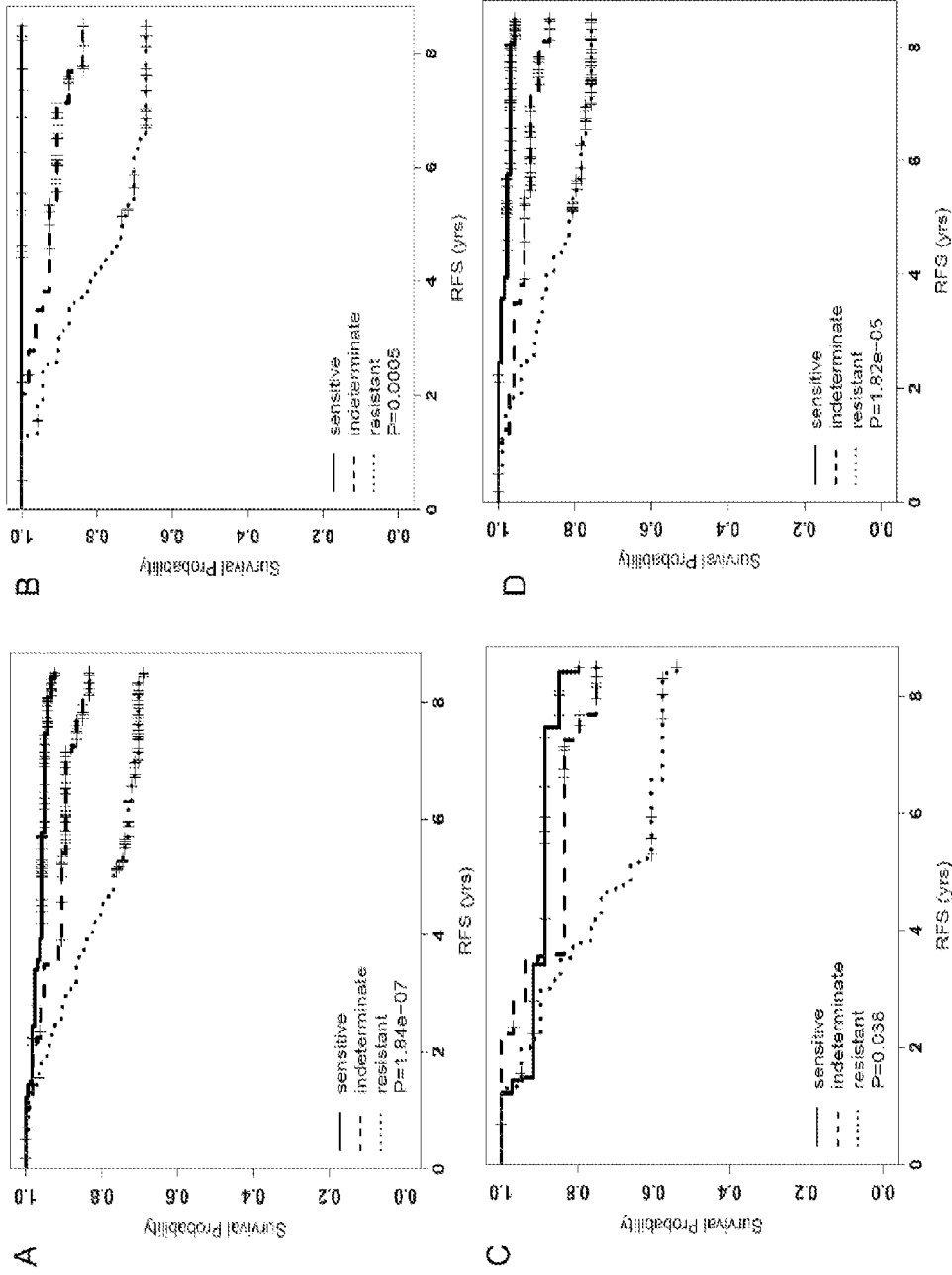


FIG. 2



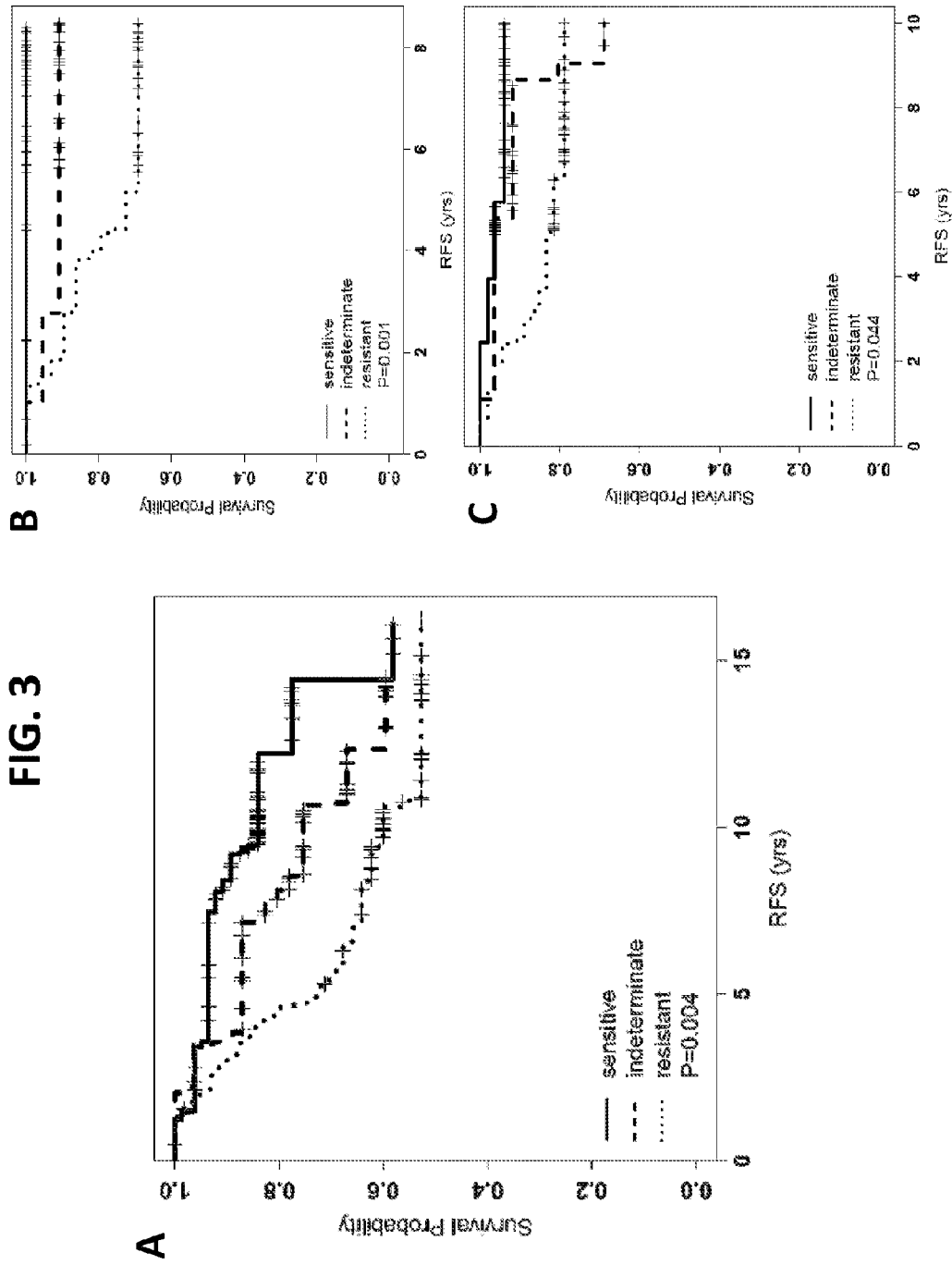
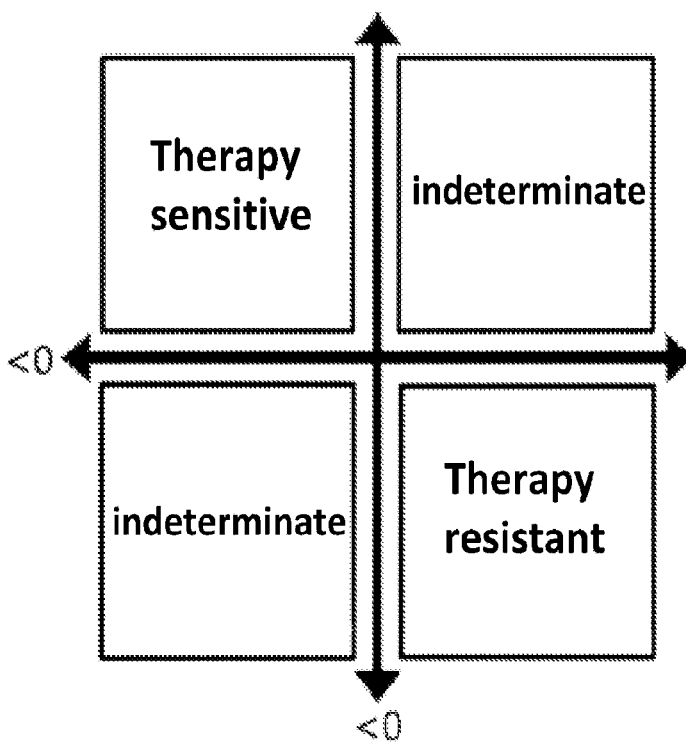


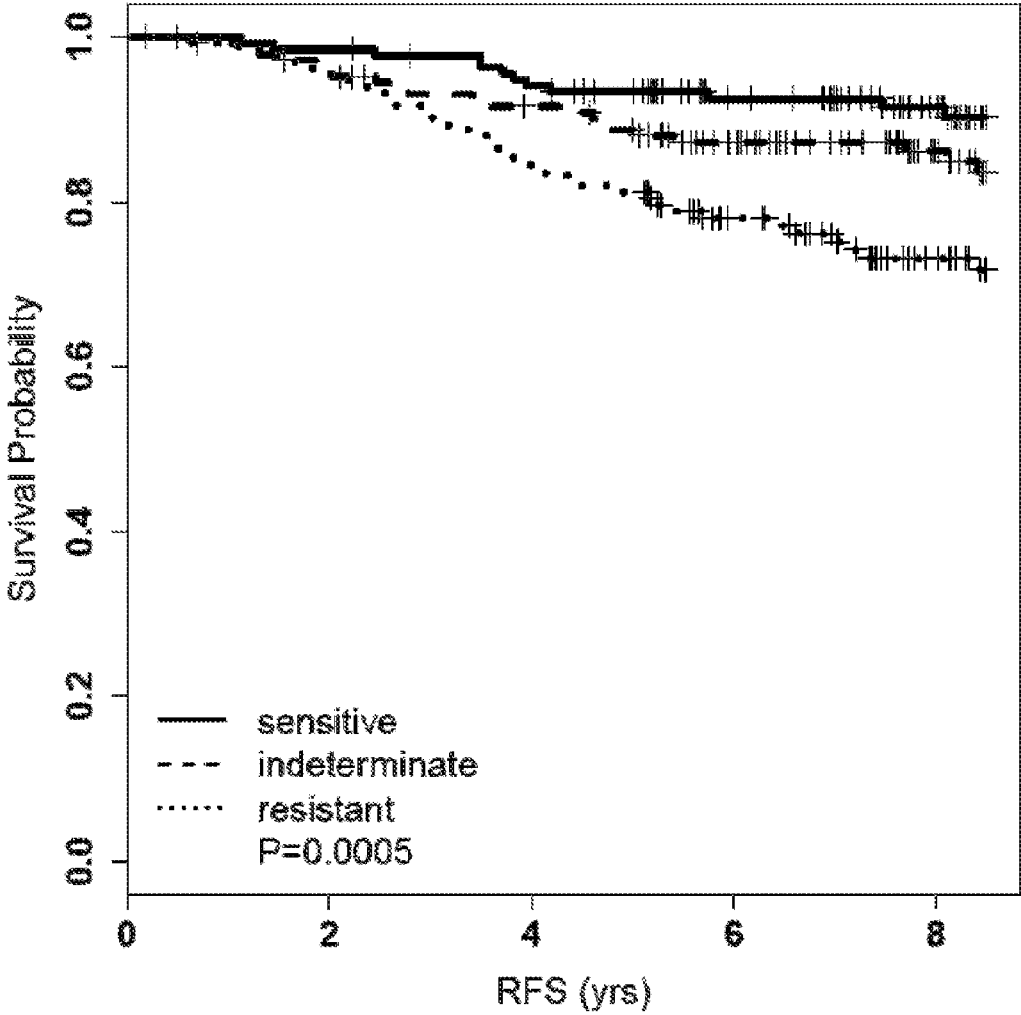
FIG. 4



X-axis: resistant gene centroid

Y-axis: sensitive gene centroid

FIG. 5



COPY NUMBER ABERRATION DRIVEN ENDOCRINE RESPONSE GENE SIGNATURE

CROSS REFERENCE TO RELATED APPLICATION

[0001] This application claims priority from U.S. Provisional Application Ser. No. 61/658,517 filed Jun. 12, 2012, which is incorporated herein by reference in its entirety.

STATEMENT REGARDING FEDERALLY SPONSORED RESEARCH

[0002] This work received support from NCI grants U01CA114722, U01CA114722S1 and R01 CA095614. The government may have certain rights in the invention.

FIELD

[0003] This work relates generally to breast cancer and, more particularly, to clinically useful methods and devices for assessing breast cancer prognosis.

INTRODUCTION

[0004] Genomic models based upon gene-expression signatures can provide clinically useful information for patient management. Nevertheless, patients are often assigned to intermediate risk groups in which the clinical decisions cannot be made confidently (Paik, S., et al. *N. Engl. J. Med.* 351:2817-26, 2004; Nielsen, T. O., et al. *Clin. Cancer Res.* 16:5222-32, 2010). Furthermore, besides HER2 and ER, most genes in these signatures are not amplicon-driven.

[0005] There are multiple studies that use gene expression markers for diagnosis, prognosis, determining treatment options, and monitoring relapse free survival.

[0006] Cobleigh et al., U.S. Pat. No. 7,569,345 (*345) provides a gene set for diagnosis and/or prognosis of breast cancer. This patent discloses a method of predicting the likelihood of long-term survival without recurrence of breast cancer for a patient having ER-positive breast cancer.

[0007] Bertucci et al., US Patent Application No. US 2011/0014191, discloses 16 serine/threonine kinases for determining poor clinical outcome or increased risk of recurrence following treatment when these genes are overexpressed.

[0008] Fuqua et al., US Patent Application No. US 2007/0059720, discloses RNA profiling for predicting resistance to chemotherapy in breast cancer.

[0009] Erlander et al., U.S. Pat. No. 7,504,214 (*214), discloses a gene signature of 149 genes that predicts tamoxifen treatment outcome in ER-positive breast cancer.

[0010] Perou et al., US Patent Application No. US 2011/0145176 ("Perou") discloses methods for classifying and evaluating the prognosis of a subject having breast cancer. Perou further provides methods for predicting outcome or response to therapy of a subject diagnosed with breast cancer using the PAM50 classification model.

[0011] Some of these tests are used in a clinical setting such as OncotypeDx Assay (Genomic Health, Inc.) and PAM50 assay (University Genomics, St. Louis, Mo.). OncotypeDx predicts recurrence of tamoxifen-treated, node-negative breast cancer (Paik, S., et al. *N. Engl. J. Med.* 351:2817-26, 2004), while PAM50 assay predicts variable response to chemotherapy (Parker, J. S., et al. *J. Clin. Oncol.* 27:1160-7, 2009).

[0012] While these studies predict and provide clinically useful information in certain groups of subjects, they are still

limited in their ability to predict risk of relapse, i.e., many patients will be deemed to be of indeterminate risk of relapse using existing prognostic models. Thus, there is a need for methods for assigning greater percentages of subjects to either high risk of relapse or low risk of relapse in view of present prognostic models or methods that further dissect intermediate risk of relapse deemed by an existing model, for example, PAM50.

SUMMARY

[0013] Accordingly, the present inventors have succeeded in integrating gene expression and gene copy data in estrogen receptor positive (ER+) breast cancer to develop a new prognostic model that is superior to models derived from gene expression data alone. The mRNA expression from genes that are both prognostic in ER+ disease and modulated by copy number aberration (CNA) provide superior assay performance as well as new biological and clinical insights.

[0014] Thus, the present teachings are drawn to methods to determine relapse risk in a human subject afflicted with estrogen receptor-positive breast cancer treated with adjuvant endocrine monotherapy. In various embodiments, the methods comprise obtaining a breast cancer tissue sample from a human subject, determining gene expression levels in the sample of most, substantially all, or all the genes listed in the Copy number Aberration Driven Endocrine Response (CADER) set. The CADER set comprises, consists essentially of or consists of 27 treatment sensitivity genes and 27 treatment resistant genes listed in Table 1. The endocrine therapy sensitivity genes include PARP3, AZGP1, ZNF18, EPHX2, IGFBP4, NUDT18, FM05, C1orf66, COL14A1, PLAT, PCM1, PHYHD1, ZBTB20, NFKB1, TK2, ABAT, ACP6, TSPAN7, TNFRSF10B, GSTM1, CHDH, KCTD9, EVL, MAP2K4, RPL21 and STC2 and the endocrine therapy resistance genes include VDAC2, KIFC1, EIF2S2, EIF2C2, CCNB1, RAD54B, RACGAP1, CDC2, CDCA5, BIRC5, C8orf76, MCM10, TDG, UBE2C, TPX2, C20orf24, FBXO45, KIF4A, NUP107, DSC2, KIF18A, ZWINT1, TMPO, CCT6A, TOP2A, CENPE and XPOT. The methods further comprise scaling the expression levels to have similar distribution of a matching prototype dataset and assigning the subject to a risk group for relapse based on the measured gene expression values. In various embodiments of the present teachings, a subject can be deemed to be at low risk of relapse if the subject has an up-regulated sensitive gene centroid value (relative to median zero) and a down-regulated resistant gene centroid value. In addition, in various embodiments, the subject can be deemed to be at high risk of relapse if the subject has a down-regulated sensitive gene centroid value (relative to median zero) and an up-regulated resistant gene centroid value. In various embodiments, a subject having an expression profile that does not lead to a determination of either low risk of relapse or high risk of relapse can be deemed to be at indeterminate risk of relapse.

[0015] In various embodiments, assigning the subject to a sensitive, indeterminate or resistant group comprises representing the expression levels as a coordinate in a quadrant in a 1-dimensional space by the resistant gene centroid and the sensitive gene centroid, and determining the Euclidean distance of the expression levels to the gene centroid of each of sensitive, resistant and indeterminate response groups, wherein the subject is assigned to the group with the shortest distance.

[0016] In some embodiments, determining the gene centroid of the treatment-resistant endocrine-response modifier genes and the gene centroid of the treatment-sensitive endocrine-response modifier genes can include calculating the double median cutoff classification scheme to categorize the risk score. In some embodiments, determining the gene centroid of the treatment-resistant endocrine-response modifier genes and the gene centroid of the treatment-sensitive endocrine-response modifier genes can comprise calculating the average of the expression levels of treatment-resistant genes and treatment-sensitive genes separately, and comparing them to the median zero (if genes are each median-centered) to give the risk score response categories.

[0017] In various embodiments, the adjuvant endocrine monotherapy can be tamoxifen treatment. In some embodiments, the adjuvant endocrine monotherapy can be aromatase inhibitor treatment.

[0018] In various embodiments, the CADER gene set can be significantly associated with copy number aberration. In some embodiments, a copy number aberration can be a copy number loss. In other embodiments, a copy number aberration can be a copy number gain, such as, in non-limiting example, a tandem duplication. In other embodiments, the copy number aberration can be copy number amplification.

[0019] Various embodiments of the present teachings include a microarray comprising, consisting essentially of, or consisting of a solid support and probe sets for each gene of the CADER set. In some configurations, the solid support can be, in non-limiting example, an Agilent 4*44 K platform (Agilent Technologies, Inc., Santa Clara Calif.) or a NanoString nCounter platform (NanoString Technologies, Inc., Seattle, Wash.). In some configurations, the probe sets can comprise, consist of or consist essentially of probes for each gene of the CADER set. In some configurations, the probe sets can comprise, consist essentially of, or consist of probes for each gene of the CADER set, plus probe sets for one or more housekeeping genes. In various embodiments, a microarray consisting essentially of a solid support and probe sets for each gene of the CADER set can also include additional probes and probe sets such as positive and negative controls, as well as proteins, buffers and salts that may be needed to conduct sample analysis.

[0020] In various embodiments, the present teachings include a microarray-based methods of predicting the likelihood of long-term survival without recurrence of cancer for a subject having estrogen receptor-positive breast cancer treated with endocrine monotherapy. The methods comprise obtaining a breast cancer tissue sample from a human subject, determining gene expression levels in the sample of most, substantially all, or all the genes listed in the CADER set. The CADER set comprises, consists essentially of or consists of 27 treatment sensitivity genes and 27 treatment resistant genes listed in Table 1. The endocrine therapy sensitivity genes include PARP3, AZGP1, ZNF18, EPHX2, IGFBP4, NUDT18, FMO5, C1orf66, COL14A1, PLAT, PCM1, PHYHD1, ZBTB20, NFKB1, TK2, ABAT, ACP6, TSPAN7, TNFRSF10B, GSTM1, CHDH, KCTD9, EVL, MAP2K4, RPL21 and STC2 and the endocrine therapy resistance genes include VDAC2, KIFC1, EIF2S2, EIF2C2, CCNB1, RAD54B, RACGAP1, CDC2, CDCA5, BIRC5, C8orf76, MCM10, TDG, UBE2C, TPX2, C20orf24, FBXO45, KIF4A, NUP107, DSC2, KIF18A, ZWINT, TMPO, CCT6A, TOP2A, CENPE and XPOT. The methods further comprise scaling the expression levels to have similar distribution of a

matching prototype dataset and assigning the subject to a risk group for relapse based on the measured gene expression values. In various embodiments of the present teachings, a subject can be deemed to be at low risk of relapse if the subject has an up-regulated sensitive gene centroid value (relative to median zero) and a down-regulated resistant gene centroid value. In addition, in various embodiments, the subject can be deemed to be at high risk of relapse if the subject has a down-regulated sensitive gene centroid value (relative to median zero) and an up-regulated resistant gene centroid value. In various embodiments, a subject having an expression profile that does not lead to a determination of either low risk of relapse or high risk of relapse can be deemed to be at indeterminate risk of relapse.

[0021] In some embodiments, determining the gene centroid of the treatment-resistant endocrine-response modifier genes and the gene centroid of the treatment-sensitive endocrine-response modifier genes can include calculating the double median cutoff classification scheme to categorize the risk score. In some embodiments, determining the gene centroid of the treatment-resistant endocrine-response modifier genes and the gene centroid of the treatment-sensitive endocrine-response modifier genes can comprise calculating the average of the expression levels of treatment-resistant genes and treatment-sensitive genes separately, and comparing them to the median zero (if genes are each median-centered) to give the risk score response categories.

[0022] In various embodiments, the adjuvant endocrine monotherapy can be tamoxifen treatment. In some embodiments, the adjuvant endocrine monotherapy can be aromatase inhibitor treatment.

BRIEF DESCRIPTION OF THE DRAWINGS

[0023] FIG. 1 illustrates the combined remark diagram for the POL and Z1031 cohort and analysis flow chart.

[0024] FIG. 2 illustrates Kaplan Meier (KM) curves of the CADER categories.

[0025] FIG. 3 illustrates KM curves of RFS on CADER response groups based on the 54-ERMGs in each of the three public cohorts: Symmans (A), Pawitan (B) and Zhang (C).

[0026] FIG. 4 illustrates a quadrant in a 2-dimensional space by the resistant and the sensitive gene centroid.

[0027] FIG. 5 illustrates KM curves for sensitive/indeterminate/resistance groups using eighteen chromosome 8q resistance genes and six chromosome 8p sensitivity genes.

DETAILED DESCRIPTION

[0028] The present inventors disclose putative endocrine-response-modifier genes (ERMGs) that were identified by statistical associations between mRNA expression, copy number aberrations (CNA) and the anti-proliferative effects of neoadjuvant aromatase inhibitor (AI) therapy. Twenty-seven “treatment-sensitivity” and 27 “treatment-resistance” ERMGs were further selected through association with relapse-free survival (RFS) in patients uniformly treated with adjuvant tamoxifen monotherapy. The present teachings include 54 ERMGs and the derived copy number aberration driven endocrine response signature (CADER) that were further validated in three independent public datasets and compared with an established prognostic model (PAM50 ROR subtype-based score).

[0029] Unless defined otherwise, technical and scientific terms used herein have the same meaning as commonly

understood by one of ordinary skill in the art to which the present teachings belong. Singleton et al., *Dictionary of Microbiology and Molecular Biology* 2nd ed., J. Wiley & Sons (New York, N.Y. 1994), and March, *Advanced Organic Chemistry Reactions, Mechanisms and Structure* 4th ed., John Wiley & Sons (New York, N.Y. 1992), provide a person of skill in the art with general guides to many of the terms used in the present application.

[0030] One skilled in the art will recognize many methods and materials similar or equivalent to those described herein, which could be used in the practice of the present teachings. The present teachings are in no way limited to the methods and materials described. For purposes of the present teachings, the following terms are defined below.

[0031] As used herein, “microarray” refers to an ordered arrangement of hybridizable array elements such as polynucleotide probes, on a substrate.

[0032] As used herein, “treatment sensitive genes” are genes that are up-regulated in patients who are sensitive to endocrine treatment.

[0033] As used herein, “treatment resistance genes” are genes that are up-regulated in patients who are resistant to endocrine treatment.

[0034] As used herein, “gene amplification” refers to abnormal multiple copies of a gene or gene fragment comprised by a cell or cell line.

[0035] As used herein, “amplicon” refers to an amplified stretch of DNA.

[0036] As used herein, “prediction” refers to the likelihood that a subject will respond either favorably or unfavorably to a drug or set of drugs, and also the extent of those responses, or that a patient will survive, following surgical removal or the primary tumor and/or chemotherapy for a certain period of time without cancer recurrence.

[0037] As used herein, “long-term” survival means survival for at least 5 years following surgery or other treatment.

[0038] As used herein, “tumor” refers to cancerous tumors.

[0039] As used herein, “pathology” of cancer refers to phenomena that compromise the health of a cancer patient. These include, without limitation, abnormal cell growth, metastasis, interference with the normal functioning of neighboring cells, release of cytokines or other secretory products at abnormal levels, suppression or aggravation of inflammatory or immunological responses, neoplasia, premalignancy, malignancy, and invasion of surrounding or distant tissues or organs.

[0040] As used herein, “biological sample” is any sampling of cells, tissues, or bodily fluids containing cells. Examples of biological samples include, but are not limited to, biopsies, smears, and bodily fluids such as blood, lymph, urine, saliva, nipple aspirates, and gynecological fluids.

[0041] As used herein, “blood” includes whole blood, plasma, and serum.

[0042] Methods and compositions described herein utilize laboratory techniques well known to skilled artisans. Such techniques can be found in laboratory manuals such as Sambrook, J., et al., *Molecular Cloning: A Laboratory Manual*, 3rd ed. Cold Spring Harbor Laboratory Press, Cold Spring Harbor, N.Y., 2001; Spector, D. L. et al., *Cells: A Laboratory Manual*, Cold Spring Harbor Laboratory Press, Cold Spring Harbor, N.Y., 1998; *Methods in Enzymology* (Academic Press, Inc.); *Handbook of Experimental Immunology*, 4th edition (D. M. Weir & C. C. Blackwell, eds., Blackwell Science Inc., 1987); *Current Protocols in Molecular Biology* (F.

M. Ausubel et al., eds., 1987); and *PCR: The Polymerase Chain Reaction*, (Mullis et al., eds., 1994).

Gene Expression Profiling

[0043] In general, methods of gene expression profiling can be divided into two large groups: methods based on hybridization analysis of polynucleotides, and methods based on sequencing of polynucleotides. Methods known in the art for the quantification of mRNA expression in a sample include northern blotting and in situ hybridization (Parker & Barnes, *Methods in Molecular Biology* 106:247-283 (1999)); RNase protection assays (Hod, *Biotechniques* 13:852-854 (1992)); and reverse transcription-polymerase chain reaction (RT-PCR) (Weis et al., *Trends in Genetics* 8:263-264 (1992)). Alternatively, antibodies can be employed that can recognize specific duplexes, including DNA duplexes, RNA duplexes, and DNA-RNA hybrid duplexes or DNA-protein duplexes. Representative methods for sequencing-based gene expression analysis include Serial Analysis of Gene Expression (SAGE), and gene expression analysis by massively parallel signature sequencing (MPSS). For example, RT-PCR can be used to compare mRNA levels in different sample populations, in normal and tumor tissues, with or without drug treatment, to characterize patterns of gene expression, to discriminate between closely related mRNAs, and/or to analyze RNA structure.

[0044] A first step for an RT-PCR analysis can be extraction and/or isolation of mRNA from a sample. In some embodiments, starting material can be total RNA isolated from a human tumor, a tumor cell line, and/or corresponding normal tissues or cell lines. RNA can be isolated from a variety of primary tumors, such as, without limitation, breast, lung, colon, prostate, brain, liver, kidney, pancreas, spleen, thymus, testis, ovary, uterus, etc., tumor, or tumor cell lines. If the source of mRNA is a primary tumor, mRNA can be extracted, for example, from frozen or archived paraffin-embedded and fixed (e.g. formalin-fixed) tissue samples.

[0045] Methods for mRNA extraction are well known in the art and are disclosed in standard textbooks of molecular biology, including Ausubel et al., *Current Protocols of Molecular Biology*, John Wiley and Sons (1997). Methods for RNA extraction from paraffin embedded tissues are disclosed, for example, in Rupp and Locker, *Lab Invest.* 56:A67 (1987), and De Andres et al., *BioTechniques* 18:42044 (1995). In particular, RNA isolation can be performed using a purification kit, buffer set and protease from commercial manufacturers, such as Qiagen, according to the manufacturer’s instructions. For example, total RNA from cells in culture can be isolated using Qiagen RNeasy® mini-columns. Other commercially available RNA isolation kits include MasterPure™ Complete DNA and RNA Purification Kit (EPICENTRE®, Madison, Wis.), and Paraffin Block RNA Isolation Kit (Ambion, Inc.). Total RNA from tissue samples can be isolated using RNA Stat-60 (Tel-Test). RNA prepared from a tumor can be isolated, for example, by cesium chloride density gradient centrifugation.

[0046] A first step in gene expression profiling by RT-PCR can be the reverse transcription of the RNA template into cDNA, followed by amplification in a PCR reaction. For example, extracted RNA can be reverse-transcribed using a GeneAmp RNA PCR kit (Perkin Elmer, Calif., USA), following the manufacturer’s instructions. The cDNA can then be used as template in a subsequent PCR amplification and

quantitative analysis using, for example, a TaqMan® (Life Technologies, Inc., Grand Island, N.Y.) assay.

[0047] TaqMan® RT-PCR can be performed using commercially available equipment, such as, for example, an ABI PRISM 7700™ Sequence Detection System™ (Perkin-Elmer-Applied Biosystems, Foster City, Calif., USA), or Lightcycler (Roche Molecular Biochemicals, Mannheim, Germany).

[0048] RT-PCR can be performed using an internal standard such as mRNA for glyceraldehyde-3-phosphate-dehydrogenase (GAPDH) and/or β -actin as a control (see, e.g., Held et al., *Genome Research* 6: 986-994, 1996).

[0049] Representative protocols for profiling gene expression using fixed, paraffin-embedded tissues as the RNA source, including mRNA isolation, purification, primer extension and amplification are given in various published journal articles (for example: T. E. Godfrey et al., *J. Molec. Diagnostics* 2: 84-91, 2000; K. Specht et al., *Am. J. Pathol.* 158: 419-429, 2001). In various configurations, a representative process can start with cutting about 10 μ m-thick sections of paraffin-embedded tumor tissue samples. The RNA can be extracted, and protein and DNA can be removed. RNA repair and/or amplification steps can be included.

[0050] In some aspects of the present teachings, PCR primers and probes can be designed based upon intron sequences present in the gene to be amplified. In such aspects, a first step in the primer/probe design can be the delineation of intron sequences within the genes. This can be accomplished using publicly available software, such as the DNA BLAST software (Kent, W. J., *Genome Res.* 12(4): 656-664, 2002). Subsequent steps can follow well established methods of PCR primer and probe design.

[0051] In some configurations, in order to avoid non-specific signals, repetitive sequences within the introns can be masked when designing the primers and probes. This can be accomplished by using software such as the Repeat Masker program available on-line through the Baylor College of Medicine. This program can be used to screen DNA sequences against a library of repetitive elements and returns a query sequence in which the repetitive elements are masked. The masked intron sequences can then be used to design primer and probe sequences using a commercially or otherwise publicly available primer/probe design package, such as Primer Express (Applied Biosystems); MGB assay-by-design (Applied Biosystems); Primer3 (Steve Rozen and Helen J. Skaletsky (2000) Primer3 on the WWW for general users and for biologist programmers. In: Krawetz S, Misener S (eds) *Bioinformatics Methods and Protocols: Methods in Molecular Biology*. Humana Press, Totowa, N.J., pp 365-386).

[0052] Factors considered in PCR primer design include primer length, melting temperature (T_m), and G/C content, specificity, complementary primer sequences, and 3'-end sequence. In general, optimal PCR primers are generally 17-30 bases in length, and contain about 20% from 10% to 80%, or about 80% G+ C bases, such as, for example, about 50%, from 50 to 60%, or about 60% G+C bases. In various configurations, T_m 's between 50 and 80° C., e.g. about 50 to 70° C. can be preferred.

[0053] Further guidelines for PCR primer and probe design can be found in various published sources, e.g. Dieffenbach, C. W. et al., "General Concepts for PCR Primer Design" in: *PCR Primer, A Laboratory Manual*, Cold Spring Harbor Laboratory Press, New York, 1995, pp. 133-155; Innis and

Gelfand, "Optimization of PCRs" in: *PCR Protocols, A Guide to Methods and Applications*, CRC Press, London, 1994, pp. 5-11; and Plasterer, T. N. *Primerselect: Primer and probe design*. *Methods Mol. Biol.* 70:520-527 (1997), the entire disclosures of which are hereby expressly incorporated by reference.

Microarrays

[0054] In some embodiments, differential gene expression can also be identified, or confirmed using a microarray technique. Thus, the expression profile of breast cancer-associated genes can be measured in either fresh or paraffin-embedded tumor tissue, using microarray technology. In these methods, polynucleotide sequences of interest (including cDNAs and oligonucleotides) can be plated, or arrayed, on a microchip substrate. The arrayed sequences are then hybridized with specific DNA probes from cells or tissues of interest. Just as in the RT-PCR method, the source of mRNA typically can be total RNA isolated from human tumors or tumor cell lines, and corresponding normal tissues or cell lines. Thus RNA can be isolated from a variety of primary tumors or tumor cell lines. If the source of mRNA is a primary tumor, mRNA can be extracted, for example, from frozen or archived paraffin-embedded and fixed (e.g. formalin-fixed) tissue samples.

[0055] In an embodiment of the microarray technique, PCR-amplified inserts of cDNA clones can be applied to a substrate in a dense array. The microarrayed genes, immobilized on the microchip, can be suitable for hybridization under stringent conditions.

[0056] In some embodiments, fluorescently labeled cDNA probes can be generated through incorporation of fluorescent nucleotides by reverse transcription of RNA extracted from tissues of interest. Labeled cDNA probes applied to the chip can hybridize with specificity to loci of DNA on the array. After washing to remove non-specifically bound probes, the chip can be scanned by confocal laser microscopy or by another detection method, such as a CCD camera. Quantification of hybridization of each arrayed element allows for assessment of corresponding mRNA abundance.

[0057] In some configurations, dual color fluorescence can be used. With dual color fluorescence, separately labeled cDNA probes generated from two sources of RNA are hybridized pairwise to the array. The relative abundance of the transcripts from the two sources corresponding to each specified gene is thus determined simultaneously. In various configurations, the miniaturized scale of the hybridization can afford a convenient and rapid evaluation of the expression pattern for large numbers of genes. In various configurations, such methods can have sensitivity required to detect rare transcripts, which are expressed at fewer than 1000, fewer than 100, or fewer than 10 copies per cell. In various configurations, such methods can detect at least approximately two-fold differences in expression levels (Skena et al., *Proc. Natl. Acad. Sci. USA* 93(2): 106-149 (1996)). In various configurations, microarray analysis can be performed by commercially available equipment, following manufacturer's protocols, such as by using the Affymetrix GenChip technology, or Incyte's microarray technology.

Serial Analysis of Gene Expression (SAGE)

[0058] SAGE is a method that allows simultaneous and quantitative analysis of a large number of gene transcripts,

without the need of providing an individual hybridization probe for each transcript, in various configurations of these methods, a short sequence tag (about 10-14 bp) is generated that contains sufficient information to uniquely identify a transcript, provided that the tag is obtained from a unique position within each transcript. Then, many transcripts are linked together to form long serial molecules that can be sequenced, revealing the identity of the multiple tags simultaneously. The expression pattern of any population of transcripts can be quantitatively evaluated by determining the abundance of individual tags, and identifying the gene corresponding to each tag (Velculescu et al., *Science* 270:484-487 (1995); Velculescu et al., *Cell* 88:243-51 (1997)).

MassARRAY Technology

[0059] The MassARRAY (Sequenom, San Diego, Calif.) technology is an automated, high-throughput method of gene expression analysis using mass spectrometry (MS) for detection. According to this method, following the isolation of RNA, reverse transcription and PCR amplification, the cDNAs are subjected to primer extension. The cDNA-derived primer extension products are purified, and dispensed on a chip array that is pre-loaded with the components needed for MALDI-TOF MS sample preparation. The various cDNAs present in the reaction are quantitated by analyzing the peak areas in the mass spectrum obtained.

Gene Expression Analysis by Massively Parallel Signature Sequencing (MPSS)

[0060] This method, described by Brenner et al., *Nature Biotechnology* 18:630-634 (2000), is a sequencing approach that combines non-gel-based signature sequencing with in vitro cloning of millions of templates on separate 5 µm diameter microbeads. First, a microbead library of DNA templates is constructed by in vitro cloning. This is followed by the assembly of a planar array of the template-containing microbeads in a flow cell at a high density (typically greater than 3.times.10⁶ microbeads/cm²). The free ends of the cloned templates on each microbead are analyzed simultaneously, using a fluorescence-based signature sequencing method that does not require DNA fragment separation. This method has been shown to simultaneously and accurately provide, in a single operation, hundreds of thousands of gene signature sequences from a yeast cDNA library.

General Description of the mRNA Isolation, Purification and Amplification

[0061] The steps of a representative protocol for profiling gene expression using fixed, paraffin-embedded tissues as the RNA source, including mRNA isolation, purification, primer extension and amplification are given in various published journal articles {for example: T. E. Godfrey et al. *J. Molec. Diagnostics* 2: 84-91 [2000]; K. Specht et al., *Am. J. Pathol.* 158: 419-29 [2001]}. Briefly, a representative process starts with cutting about 10 µm thick sections of paraffin-embedded tumor tissue samples. The RNA is then extracted, and protein and DNA are removed. After analysis of the RNA concentration, RNA repair and/or amplification steps may be included, if necessary, and RNA is reverse transcribed using gene specific promoters followed by RT-PCR. Finally, the data are analyzed to identify the best treatment option(s) available to the patient on the basis of the characteristic gene expression pattern identified in the tumor sample examined.

Breast Cancer Gene Set, Assayed Gene Subsequences, and Clinical Application of Gene Expression Data

[0062] Some embodiments of the present teachings comprise measuring expression levels of certain genes by breast cancer tissue to provide prognostic information. In various configurations, expression levels can be normalized regarding both differences in the amount of RNA assayed and variability in the quality of the RNA used. Therefore, an assay can involve measurement of the expression of certain "normalizing" genes, including housekeeping genes such as, for example, GAPDH and/or Cyp1. In some configurations, normalization can be based on the mean or median signal (Ct) of all of the assayed genes or a subset thereof (global normalization approach). On a gene-by-gene basis, measured normalized amount of a patient tumor mRNA can be compared to the amount found in a breast cancer tissue reference set. The number (N) of breast cancer tissues in this reference set can be sufficiently high to ensure that different reference sets (as a whole) behave essentially the same way. In various configurations, if this condition is met, the identity of the individual breast cancer tissues present in a particular set can have no significant impact on the relative amounts of the genes assayed. In some configurations, the breast cancer tissue reference set can consist of or consist essentially of at least about 30, preferably at least about 40, more preferably at least about 50, different FPE breast cancer tissue specimens. Unless noted otherwise, normalized expression levels for each mRNA/tested tumor/patient can be expressed as a percentage of the expression level measured in the reference set. More specifically, the reference set of a sufficiently high number (e.g. at least 40) of tumors can yield a distribution of normalized levels of each mRNA species. The level measured in a particular tumor sample to be analyzed falls at some percentile within this range, which can be determined by methods well known in the art. Below, unless noted otherwise, reference to expression levels of a gene assume normalized expression relative to a reference set although unless stated otherwise.

[0063] In some embodiments, gene expression data can be pre-processed, by addressing for example but without limitation, missing data, translation, scaling, normalization, and/or weighting. In some configurations, multivariate projection methods, such as principal component analysis (PCA) and partial least squares analysis (PLS), can be used as scaling-sensitive methods. In these configurations, by using prior knowledge and experience about the type of data studied, the quality of the data prior to multivariate modeling can be enhanced by scaling and/or weighting. In some embodiments, scaling and weighting can be used to place the data in the correct metric, thereby revealing patterns inherent in the data.

[0064] In some configurations, missing data, for example gaps in column values, can be replaced or "filled" with, for example but without limitation, the mean value of a column ("mean fill"); a random value ("random fill"); or a value based on a principal component analysis ("principal component fill").

[0065] As used herein, "translation" of descriptor coordinate axes can include normalization and mean centering. In some configurations, "normalization" can be used to remove sample-to-sample variation. In various embodiments, for microarray data, the process of normalization can be used to remove systematic errors by balancing the fluorescence intensities of the two labeling dyes. In various configurations,

methods for calculating normalization factor can include: (i) global normalization that uses all genes on the array; (ii) housekeeping genes normalization that uses constantly expressed housekeeping/invariant genes; and (iii) internal controls normalization that uses known amount of exogenous control genes added during hybridization (Quackenbush (2002) Nat. Genet. 32 (Suppl.), 496-501). In one embodiment, intrinsic genes disclosed herein can be normalized to control housekeeping genes. For example, the housekeeping genes described in U.S. Patent Publication 2008/0032293, which is herein incorporated by reference in its entirety, can be used for normalization. Exemplary housekeeping genes include MRPL19, PSMC4, SF3A1, PUM1, ACTB, GAPD, GUSB, RPLP0, and TFRC. It will be understood by one of skill in the art that the methods disclosed herein are not bound by normalization to any particular housekeeping genes, and that any suitable housekeeping gene(s) known in the art can be used.

[0066] A gene centroid represents the average expression levels of a set of predefined genes for an individual relative to control levels. The CADER classification centers on two centroids, the centroid of the 27 CADER resistant genes and the centroid of the 27 CADER sensitive genes.

[0067] In various configurations, many normalization approaches are possible, which can be applied at any of several points in the analysis. In a configuration, microarray data can be normalized using the LOWESS method (Yang, Y. H., et al. Nucleic Acids Res. 30:e15, 2002). In another embodiment, qPCR data can be normalized to the geometric mean of a set of housekeeping genes.

[0068] In some embodiments, “mean centering” can also be used to simplify interpretation. In these embodiments, for each descriptor, the average value of that descriptor for all samples can be subtracted. In this way, the mean of a descriptor coincides with the origin, and all descriptors can be “centered” at zero. In “unit variance scaling,” data can be scaled to equal variance. In various configurations, the value of each descriptor can be scaled by $1/\text{StDev}$, where StDev is the standard deviation for that descriptor for all samples.

[0069] In some embodiments, “Pareto scaling” can also be used to simplify interpretation (van den Berg, R. A., et al., BMC Genomics. 7:142, 2006). In Pareto scaling, the value of each descriptor is scaled by $1/\sqrt{\text{StDev}}$, where StDev is the standard deviation for that descriptor for all samples. In this way, each descriptor has a variance numerically equal to its initial standard deviation. In various configurations, Pareto scaling can be performed, for example, on raw data or mean centered data.

[0070] In some embodiments, “logarithmic scaling” can be used to assist interpretation when data have a positive skew and/or when data spans a large range, e.g., several orders of magnitude. In these embodiments, a value is replaced by the logarithm of that value.

[0071] In some embodiments, “equal range scaling” can be used to assist interpretation. In these embodiments, each descriptor is divided by the range of that descriptor for all samples. In this way, all descriptors have the same range, that is, 0-1. However, this method can be sensitive to the presence of outlier points.

[0072] In some embodiments, “autoscaling,” can be used to assist interpretation. In these embodiments, each data vector is mean centered and unit variance scaled. This technique can be used to weigh each descriptor equally.

[0073] In various embodiments, a double median cut-off scheme can be used to classify subjects into the three response groups (sensitive, resistant and indeterminate). In various configurations, each gene can be normalized to have a zero median and a unit inter-quartile range (IQR). The gene centroid of 27 CADER resistant genes and the gene centroid of the 27 CADER sensitive genes can be separately calculated. Because of this normalization, the double median cut-off can be equivalent to double zero cut-off since all genes and centroids have a zero median. Patients with a greater-than-zero resistant gene centroid value and a less-than-zero sensitive gene centroid can be assigned into the therapy resistant group while the patients with less-than-zero resistant gene centroid value and a greater-than-zero sensitive gene centroid can be assigned into the therapy sensitive group. In various configurations, detection of up-regulation of resistant genes can lead to a bad prognosis, and detection of up-regulation of the sensitive genes can lead to good prognosis. The remaining patients can have indeterminate responses to therapy. (FIG. 4)

Methods

[0074] The methods and compositions described herein utilize laboratory techniques well known to skilled artisans, and can be found in references such as Sambrook and Russel (2006), Condensed Protocols from Molecular Cloning: A Laboratory Manual, Cold Spring Harbor Laboratory Press, ISBN 0879697717; Sambrook and Russel (2001) Molecular Cloning: A Laboratory Manual, Cold Spring Harbor Laboratory Press, ISBN 0879695773; Ausubel et al. (2002) Short Protocols in Molecular Biology, Current Protocols, ISBN 0471250929; Spector et al. (1998) Cells: A Laboratory Manual, Cold Spring Harbor Laboratory Press, ISBN 0879695226.

EXAMPLES

[0075] The present teachings including descriptions provided in the Examples that are not intended to limit the scope of any claim or aspect. Unless specifically presented in the past tense, an example can be a prophetic or an actual example. The following non-limiting examples are provided to further illustrate the present teachings. Those of skill in the art, in light of the present disclosure, will appreciate that many changes can be made in the specific embodiments that are disclosed and still obtain a like or similar result without departing from the spirit and scope of the present teachings.

Example 1

[0076] This example illustrates the identification of Endocrine Response Modifier Genes (ERMG).

[0077] Study samples to identify ERMG were used from previously described neoadjuvant endocrine therapy studies, preoperative letrozole Phase 2 (POL) trial and ACOSOG Z1031 neoadjuvant aromatase inhibitor (AI) trial (Van Tine, B. A., et al. 2011; Olson, J.A., Jr., et al. 2009). A 10% Ki67 cut-point in the surgical specimen was used to define AI sensitivity and resistance, as this cut point is a reliable surrogate for relapse-free survival (RFS). Fifty-two and 179 patients from the POL and Z1031 cohort respectively were used for discovery (FIG. 1A). Total sample size (sample size for POL/sample size for Z1031) are noted in each box. Baseline PAM50 subtype and baseline and surgical specimen ER and Ki67 levels were similarly distributed between the two cohorts. Public gene expression data were accessed on 263

patients from the Loi study (Loi, S., et al. 2007, referred to herein as “Loi”), 195 from the Symmans study (Symmans, W. F., et al. 2010, referred to herein as “Symmans”), 136 from the Zhang study (Zhang, Y., et al. 2009, referred to herein as “Zhang”) and 87 from the Pawitan study (Pawitan, Y., et al. 2005, referred to herein as “Pawitan”), restricting to ER+ breast cancer patients treated with adjuvant endocrine monotherapy (i.e. no chemotherapy) (FIG. 1B). Sequential analysis steps that lead to the CADER signature are shown in this flow chart (FIG. 1B). In each step, analyzed cohorts, analysis end points, genomic profiling and statistical methods, and number of retained treatment resistance and sensitivity signature genes are presented.

[0078] ERMGs were identified in study samples by significance analysis of microarrays (SAM) as genes differentially expressed between the sensitive and resistant tumors (defined by the 10% Ki67 cut point) at the 5% false discovery rate (FDR). There were 1927 putative ERMGs that fit these criteria. Of these, 1047 are up-regulated in the resistant tumors with a fold-change (relative to sensitive) ranging from 1.29–1.80 while 780 ERMGs were up-regulated in the sensitive tumors with a fold change (relative to resistant) between 1.32 and 1.81.

[0079] Two exercises were conducted in parallel to focus verification and validation efforts on the most relevant genes. First, genes were excluded whose mRNA levels were not significantly associated with CNA, based on 137 POL-Z1031 cases with paired gene-expression and aCGH, comparative genomic hybrid, data. This analysis revealed that 617 (460 resistant and 157 sensitive) of the original 1927 ERMGs were differentially expressed between copy number gain/amplification versus neutral/LOH samples. Correlation matrixes demonstrated that copy number data in contiguous chromosomal locations were highly correlated. Chromosomes (Chr) 6, 1, 20, 3 and 8 harbored the greatest number of CNA-associated resistance-ERMGs (n=64, 60, 43, 40, 40 respectively) while sensitivity-ERMGs were largely located on Chr17, 4, 1, 5, 11 and 8 (n=25, 18, 15, 14, 13, and 12 respectively), in general, the sensitivity ERMGs were predominantly affected by LOH whereas resistance ERMGs were dominantly affected by gene gain and amplification (Table 1). Table 1 presents the list of the 54 ERMGs including official gene symbols, gene descriptions, Cox survival P-values from Loi, copy number P values are shown for each ERMG.

TABLE 1

Listing of the 54 ERMGs.				
Symbol	CNV Percentage (del/neutral/gain/amp)	Locus	CNV P	Cox P
Endocrine Therapy Sensitivity Genes				
PARP3	36.1/60.6/3.2/—	3p21.31	0.0418	1.80E-05
AZGP1	31.2/58.4/10.4/—	7q22.1	0.0013	3.81E-05
ZNF18	54.2/44.5/1.3/—	17p11.2	0.0416	1.13E-04
EPHX2	48.0/40.9/11.0/—	8p21	0.0004	6.57E-04
IGFBP4	34.6/45.8/17.0/2.6	17q12	0.0239	0.0010
NUDT18	53.6/36.6/9.8/—	8p21.3	0.0003	0.0010
FMO5	0.6/38.1/55.5/5.8	1q21.1	0.0008	0.0018
C1orf6	2.6/34.8/57.4/5.2	1q23.1	2.68E-09	0.0021
COL14A1	2.6/47.7/27.4/22.2	8q23	0.0003	0.0031
PLAT	16.2/50.6/22.7/10.4	8p12	0.0001	0.0033
PCM1	43.2/45.8/10.3/0.6	8p22	1.8E-05	0.0051
PHYHD1	44.0/52.0/4.0/—	9q34.11	0.0013	0.0072
ZBTB20	4.7/82.4/12.2/0.7	3q13.2	0.0344	0.0081
NFKB1	6.5/84.5/8.4/0.6	4q24	0.0214	0.0081

TABLE 1-continued

Listing of the 54 ERMGs.				
Symbol	CNV Percentage (del/neutral/gain/amp)	Locus	CNV P	Cox P
TK2	67.3/26.1/6.5/—	16q22	0.0019	0.0081
ABAT	4.5/49.7/43.9/1.9	16p13.2	1.56E-05	0.0083
ACP6	0.6/38.1/54.8/6.5	1q21	0.0023	0.0094
TSPAN7	17.4/66.5/14.8/1.3	Xp11.4	0.0482	0.0097
TNFRSF10B	50.3/40.6/9.0/—	8p22	0.0004	0.0131
GSTM1	27.1/69.0/3.2/0.6	1p13.3	0.0245	0.0196
CHDH	23.4/73.4/3.2/—	3p21.1	0.0115	0.0244
OSBPL1A	25.2/66.5/7.7/0.6	18q11.1	0.0423	0.0272
KCTD9	45.8/43.9/10.3/—	8p21.1	0.0051	0.0285
EVL	21.9/65.6/11.3/1.3	14q32.2	0.0001	0.0294
MAP2K4	54.5/44.2/1.3/—	17p11.2	0.0170	0.0308
RPL21	27.7/61.9/8.4/1.9	13q12.2	0.0006	0.0333
STC2	9.0/70.3/20.6/—	5q35.1	0.0070	0.0466
Endocrine Therapy Resistance Genes				
VDAC2	5.2/78.7/14.2/1.9	10q22	3.2E-07	3.44E-08
KIFC1	17.4/73.5/9.0/—	6p21.3	0.0039	1.63E-06
EIF2S2	11.1/63.4/25.5/—	20q11.2	2.3E-04	3.57E-06
EIF2C2	7.2/48.4/26.8/17.6	8q24	5.4E-14	4.80E-06
CCNB1	24.5/58.1/17.4/—	5q12	4.5E-04	7.55E-06
RAD54B	2.0/47.1/33.3/17.6	8q22.1	2.4E-15	1.12E-05
RACGAP1	11.6/76.1/12.3/—	12q13.12	0.0187	2.23E-05
CDC2	5.2/80.0/14.2/0.6	10q21.1	0.0014	2.27E-05
CDCA5	30.3/58.1/10.3/1.3	11q12.1	6.2E-04	2.29E-05
BIRC5	33.5/38.1/27.1/1.3	17q25	7.2E-07	2.67E-05
C8orf76	5.8/46.1/28.6/19.5	8q24.13	1.4E-18	3.27E-05
MCM10	9.7/78.1/11.0/1.3	10p13	1.2E-04	3.52E-05
TDG	11.0/72.9/15.5/0.6	12q24.1	1.4E-04	3.68E-05
UBE2C	4.5/54.5/36.4/4.5	20q13.12	4.6E-04	3.70E-05
TPX2	11.0/63.9/25.2/—	20q11.2	7.0E-03	3.71E-05
C20orf24	13.6/57.4/25.2/3.9	20q11.23	5.2E-08	4.45E-05
FBXO45	13.6/70.3/14.8/1.3	3q29	3.6E-05	4.46E-05
KIF4A	22.2/69.9/7.8/—	Xq13.1	3.5E-02	4.51E-05
NUP107	2.0/69.5/25.3/3.2	12q15	2.6E-07	6.62E-05
DSC2	14.2/71.6/13.6/0.6	18q12.1	2.5E-02	6.91E-05
KIF18A	6.6/77.0/15.1/1.3	11p14.1	3.5E-07	7.09E-05
ZWINT	5.2/80.7/13.6/0.6	10q21	3.2E-02	7.24E-05
TMPO	12.6/68.9/17.2/1.3	12q22	1.0E-02	7.71E-05
CCT6A	14.2/69.7/16.1/—	7p11.2	2.6E-04	8.91E-05
TOP2A	43.8/40.5/15.0/0.6	17q21	2.7E-07	9.03E-05
CENPE	6.5/85.2/7.7/0.6	4q24	1.9E-04	1.31E-04
XPOT	3.9/68.4/25.2/2.6	12q14.2	2.0E-03	1.32E-04

Ⓢ indicates text missing or illegible when filed

[0080] In the second exercise, the 1927 putative ERMGs were simultaneously screened for association with RFS using the independent Loi cohort (Loi, S., et al. 2007). In univariate survival analysis, a total of 431 ERMGs (317 resistant and 114 sensitive) were significantly associated with RFS in the same resistance/sensitivity direction (by hazard ratio estimation) as observed in POL-Z1031. Only fifty two of these genes (12%) overlapped with those contained in the five gene signatures previously published as prognostic in ER+ breast cancer (Paik, S., et al. N. Engl. J. Med. 351:2817-26, 2004; Nielsen, T. O., et al. Clin. Cancer Res. 16:5222-32, 2010; Chanrion, M., et al. Clin. Cancer Res. 14:1744-52, 2008; van de Vijver, M. J., et al. N. Engl. J. Med. 347:1999-2009, 2002; Wang, Y., et al. Lancet. 365:671-9, 2005). Taking the results from both exercises, two hundred and twenty four ERMGs (197 resistant and 27 sensitivity) survived.

Example 2

[0081] This example illustrates the prognostic power of the 54 ERMGs individually.

[0082] Three independent public microarray data sets on ER+ breast cancer tumors treated with adjuvant tamoxifen

only were accessed (Symmans, Zhang and Pawitan). The hazard ratios (HRs), 95% CIs and P-values estimated from univariate Cox regression models were calculated for each ERMG within each public cohort. By meta-analysis, 25 among the 48 genes present in at least one cohort showed significant association with RFS and in the expected direction as from the discovery. Hierarchical cluster analyses on the 54 ERMGs subsequently demonstrated that the sensitivity and resistant genes separated consistently and cleanly in all cohorts. Based on the joint expression pattern of treatment sensitivity and resistance ERMGs, three groups of samples were definable: a group with high-expression of resistance-ERMGs and low-expression of sensitivity-ERMGs ('resistant' group), a second group with the opposite expression pattern ('sensitive' group) and a third with a mixed pattern ('indeterminate' group).

[0083] A CADER signature through application of a double median cutoff was developed to classify patients into the three groups. Categorical CADER calls (sensitive/indeterminate/resistant) can be separately made on each cohort. The three categories of CADER calls exhibited a balanced distribution on the three public cohorts (Chi-square p-value $p=0.48$), especially between Symmans and Pawitan (Chi-square p-value $p=0.83$). The association between CADER and RFS can be tested individually within each cohort. Assembled together, the CADER calls from all the three cohorts can also be tested for a combined association analysis

with RFS. The CADER categories successfully produced differing risk of relapse predictions in the combined data (FIG. 2A, Log-rank test $P=1.84e-07$) as well as within each cohort separately (FIG. 3A-C Log-rank tests, Symmans $p=0.004$, Pawitan $P=0.001$, Zhang $P=0.044$). Survival probabilities (FIG.) of the CADER-sensitive group were nearly 25% higher compared to the resistance group at year 8 (94% vs. 70%) in the combined dataset with an estimated HR (resistant vs. sensitive) of 5.18 (95% CI: 2.67~10.08) while the HR of indeterminate to sensitive was 2.31 (95% CI: 1.06~5.02). Kaplan Meier (KM) curves of RFS in the combined public cohorts are displayed in FIG. 2, showing data from all patients (A), the patient subset of intermediate-risk designated by the PAM50 ROR-S model (B), node positive subset of patients (C), and node negative subset of patients (D). CADER groups are indicated as follows: sensitive indicated by solid lines, indeterminate indicated by dashed lines and resistant indicated by dotted lines. The P-values are based on log rank tests. This illustrates that patient stratification into endocrine therapy response groups using the CADER model is significantly associated with survival, even by stratification of node status and within the ROR-S median risk subset.

[0084] The CADER assignments were highly concordant with the PAM50 ROR-S (Fisher exact test $P=3.50E-44$) and the PAM50 intrinsic subtype calls (see Parker, J. S., et al. 2009, referred to herein as "PAM50") (Fisher exact test $P=8.22E-37$) in the combined dataset and individually (Table 2).

TABLE 2

Concordance between CADER response groups and PAM50-based ROR-S and breast cancer intrinsic subtypes.					
Set	CADER Response Group	N	Node-	Node+	Node.P
POL-Z1031	Sensitive	86			—
	Indeterminate	53			
	Resistant	92			
Loi (N = 263)	Sensitive	99	47	48	0.5228
	Indeterminate	69	28	38	
	Resistant	95	39	54	
MDACC (N = 195)	Sensitive	79	52	27	0.1371
	Indeterminate	55	33	22	
	Resistant	61	30	31	
Zhang (N = 136)	Sensitive	54	54	0	—
	Indeterminate	28	28	0	
	Resistant	54	54	0	
Pawitan (N = 87)	Sensitive	35	26	8	0.2592
	Indeterminate	22	11	9	
	Resistant	30	20	9	
All (N = 418)	Sensitive	168	132	35	0.1881
	Indeterminate	105	72	31	
	Resistant	145	104	40	

Set	CADER Response Group	ROR_S			RORS.P
		Low	Med	High	
POL-Z1031	Sensitive	57	25	0	1.73E-23
	Indeterminate	14	32	4	
	Resistant	4	55	31	
Loi (N = 263)	Sensitive	47	18	0	3.26E-22
	Indeterminate	17	28	4	
	Resistant	1	31	30	
MDACC (N = 195)	Sensitive	67	12	0	1.07E-21
	Indeterminate	26	26	3	
	Resistant	6	32	23	

TABLE 2-continued

Concordance between CADER response groups and PAM50-based ROR-S and breast cancer intrinsic subtypes.							
Set	CADER Response Group	Subtype					Subtype.P
		LumA	LumB	Her2	Basal	Normal	
Zhang (N = 136)	Sensitive	45	9	0			2.72E-16
	Indeterminate	7	19	2			
	Resistant	6	30	18			
Pawitan (N = 87)	Sensitive	26	9	0			1.85E-11
	Indeterminate	12	10	0			
	Resistant	2	11	17			
All (N = 418)	Sensitive	138	30	0			3.50E-44
	Indeterminate	44	55	5			
	Resistant	14	73	58			

Set	CADER Response Group	Subtype					Subtype.P
		LumA	LumB	Her2	Basal	Normal	
POL-Z1031	Sensitive	68	18				1.16E-22
	Indeterminate	19	34				
	Resistant	5	87				
Loi (N = 263)	Sensitive	70	15	2	3	9	1.44E-26
	Indeterminate	15	36	3	5	10	
	Resistant	2	58	17	14	4	
MDACC (N = 195)	Sensitive	61	4	0	0	14	2.59E-19
	Indeterminate	26	17	1	0	11	
	Resistant	10	33	11	6	1	
Zhang (N = 136)	Sensitive	43	4	0	0	7	2.15E-11
	Indeterminate	13	11	0	1	3	
	Resistant	10	33	5	3	3	
Pawitan (N = 87)	Sensitive	27	6	0	0	2	6.21E-08
	Indeterminate	10	8	0	0	4	
	Resistant	3	17	5	4	1	
All (N = 418)	Sensitive	131	14	0	0	23	8.22E-37
	Indeterminate	49	36	1	1	18	
	Resistant	23	83	21	13	5	

Analyzed cohorts include POL-Z1031, Loi, Symmans, Zhang, Pawitan and “All” (combining Symmans, Zhang and Pawitan) in Table 2. High agreement between CADER response groups, ROR-S and breast cancer subtypes can be observed within each individual cohort, as well as the combination of the three public cohorts. The association between CADER classification and RFS was still significant after stratification by nodal status in the combined analysis (FIG. 2C-D, Log rank test P=0.038 in node positive and P=1.82e-05 in node negative). Despite the high concordance with the PAM50-defined groups, the CADER classification stratified the risk of relapse within the subset of patients who were assigned medium risk by the ROR-S model (FIG. 2B, Log rank test P=0.0005). To confirm the independent prognostic ability of CADER, multivariate Cox analysis can be applied. The results (Table 3) show a strong independent prognostic ability of CADER to classic clinical variables (likelihood ratio test P=5.62E-05), with the predicted resistant patients experiencing a HR of 5.32 (95% CI: 2.41~11.76) relative to sensitive patients.

TABLE 3

Multivariate survival analysis of the combined Public cohort (Symmans and Pawitan) for RFS.		
Variable	HR (95% CI)	P
CADER (N = 238)		
Age (≥65 vs. <65)	2.4 (1.33~4.35)	0.0038
Grade (3 vs. 1~2)	0.62 (0.32~1.19)	0.1508

TABLE 3-continued

Multivariate survival analysis of the combined Public cohort (Symmans and Pawitan) for RFS.		
Variable	HR (95% CI)	P
Node (Positive vs. Negative)	2.1 (1.17~3.75)	0.0126
Tumor Size (≥2.0 cm vs. <2.0 cm)	2.73 (1.15~6.46)	0.0227
CADER indeterminate vs. sensitive	1.91 (0.81~4.51)	0.138
CADER resistant vs. sensitive	5.32 (2.41~11.76)	3.59E-05
Harrell's C-index	0.7851	
ROR-S (N = 238)		
Age (≥65 vs. <65)	2.11 (1.15~3.87)	0.016
Grade (3 vs. 1~2)	0.92 (0.47~1.8)	0.8054
Node (Positive vs. Negative)	2.52 (1.42~4.48)	0.0015
Tumor Size (3 vs. 1~2)	2.59 (1.12~5.98)	0.0263
ROR_S med vs. low	1.84 (0.99~3.4)	0.0537
ROR_S high vs. low	1.94 (0.83~4.55)	0.1283
Harrell's C-index	0.7252	
CADER + ROR-S (N = 238)		
Age (≥65 vs. <65)	2.27 (1.24~4.15)	0.0078
Grade (3 vs. 1~2)	0.66 (0.34~1.31)	0.2349
Node (Positive vs. Negative)	2.1 (1.17~3.77)	0.0132
Tumor Size (≥2.0 cm vs. <2.0 cm)	2.78 (1.17~6.6)	0.0201
ROR_S med vs. low	0.9 (0.44~1.81)	0.765
ROR_S high vs. low	0.64 (0.25~1.64)	0.3498
Harrell's C-index		0.0002

TABLE 3-continued

Multivariate survival analysis of the combined Public cohort (Symmans and Pawitan) for RFS.		
Variable	HR (95% CI)	P
CADER indeterminate vs. sensitive	2 (0.82~4.86)	0.1279
resistant vs. sensitive	6.31 (2.51~15.9)	9.23E-05
Harrell's C-index	0.7857	

TABLE 4

Survival Probability estimation of CADER and ROR-S in Public cohorts.			
Set	CADER	5 yr survival prob.	10 yr survival prob. (8 yr for all cohort)
All cohort (Symmans, Zhang, Pawitan)	sensitive (N = 168)	0.96 (0.93-0.99)	0.94 (0.91-0.98)
	indeterminate (N = 105)	0.90 (0.85-0.96)	0.85 (0.78-0.93)
	resistant (N = 145)	0.77 (0.7-0.84)	0.7 (0.63-0.78)
CADER ROR S		5 yr survival prob.	10 yr survival prob. (8 yr for all cohort)
sensitive (N = 168)	low (N = 63)	0.94 (0.91-0.98)	0.91 (0.87-0.95)
indeterminate (N = 105)	med (N = 197)	0.85 (0.80-0.91)	0.79 (0.73-0.86)
resistant (N = 145)	high (N = 158)	0.74 (0.64-0.86)	0.73 (0.62-0.85)

[0085] When both CADER and ROR-S were included in the multivariate model, CADER remained significant (likelihood ratio test P-value=0.0002) but ROR-S did not. These results illustrate the prognostic effect of CADER response groups is independent of classic clinical variables and ROR-S.

Example 3

[0086] This example illustrates a single sample predictor. [0087] A single sample predictor for CADER classification can proceed as the following. Patient can provide a breast cancer tissue sample. The sample can be subject to measurement of the microarray gene expression on the 54 CADER genes using either the Agilent 4*44 K platform or the NanoString nCounter platform. Next, the patient's 54 CADER genes' expression values (along with other patients') can be scaled to have similar distribution as the matching prototype dataset by using the "distance-weighted-discrimination-single sample predictor (DWD-SSP)" tool (for example, <https://genome.unc.edu/dwd/dwd-java.pdf>) or other software developed for this purpose. Then, the patient's gene expression data can be adjusted toward the prototype data, and the patient can be assigned to the one of the three groups based on the nearest neighbor principle. More specifically, a patient in each of the three groups in the prototype dataset can be represented as a coordinate in a quadrant in a 2-dimensional space by the resistant and the sensitive gene centroid (FIG. 4). Subsequently, the Euclidean distance of the new patient's gene expression data can be compared to the gene centroid of each of the three groups. The patient can then be assigned to the group with the shortest distance.

Example 4

[0088] This example illustrates the complex interplay between gene expression, gene copy and prognostic effects.

[0089] Examination of Chromosome 8 (Chr8) can show the complex interplay between gene expression, gene copy and prognostic effects. Multiple Chr8 genes were identified as ERMGs. Loss of a large portion of Chr8p and gene copy gain of both the remaining fragment of Chr8p and often concomitant gain of the entire Chr8q arm had a strong influence on gene expression and prognosis. A CADER classification focused only on 24 Chr8 ERMGs in the public data sets produced significant risk stratification in the merged data (FIG. 5, log-rank P=0.005). Notably neither the 21 gene recurrence score (Paik, S., et al. 2004) nor the PAM50 model (Parker, J. S., et al. 2009) includes genes on Chr8. The CADER gene expression signature can successfully parse this complexity and can translate the information into a prognostic test.

Example 5

[0090] This example illustrates a patient classified in the indeterminate group using the PAM50 study can be better characterized using the CADER gene expression signature of the present teachings.

[0091] In this example, a patient was diagnosed at age 69 as grade 1 node negative with a tumor size of 1.2 cm. Gene expression profile of patient's CADER gene signature is presented in table 5.

TABLE 5

Endocrine Therapy Sensitivity Genes		Endocrine Therapy Resistance Genes	
Gene Symbol	Expression Level	Gene Symbol	Expression Level
PARP3	9.089031301	CENPE	5.714622364
AZGP1	11.35771279	CCNB1	8.154402347
EPHX2	9.070143362	KIFC1	6.484647472
IGFBP4	12.32944125	CCT6A	9.620321527
NUDT18	8.382194264	EIF2C2	8.044701081
FMO5	8.142263278	RAD54B	5.756407083
C1orf66	9.247242841	VDAC2	11.7508889
COL14A1	7.416577951	MCM10	6.069573765
PLAT	9.831019817	ZWINT	9.805901534
PCM1	11.28875579	KIF18A	6.147591126
ZBTB20	9.688345972	RACGAP1	8.457413969
NKFB1	9.990544209	TDG	9.108421015
TK2	8.328267011	NUP107	9.937813942
ABAT	10.16352859	TMPO	8.183558895
ACP6	10.39248656	XPOT	9.450319913
TSPAN7	8.854489277	BIRC5	8.129717848
TNFRSF10B	7.479798286	TOP2A	8.069509653
GSTM1	10.09219086	DSC2	6.432188782
OSBPL1A	10.03427376	EIF2S2	7.637794024
KCTD9	7.904455623	UBE2C	9.62721325
EVL	12.75017457	TPX2	8.319388569
MAP2K4	9.256905695	C20orf24	11.46484768
RPL21	13.97244515	KIF4A	7.598866178
STC2	12.7561502		

*missing gene symbols are ZNF18, PHYHD1, CHDH, which are sensitivity genes, and CDC2, CDCA5, C8orf76, FBXO45, which are resistance genes. These probes were not included in the PAM50 study.

Analyzing the data with the methods of the present teachings, categorizes this patient as low risk. This patient exhibited a relapse-free survival time of 10.22 years.

Example 6

[0092] This example illustrates a patient classified in the indeterminate group using the PAM50 study can be better characterized using the CADER gene expression signature of the present teachings.

[0093] In this example, patient was diagnosed at age 78 as grade 2 node positive. Gene expression profile of patient's CADER gene signature is presented in table 6.

TABLE 6

Endocrine Therapy Sensitivity Genes		Endocrine Therapy Resistance Genes	
Gene Symbol	Expression Level	Gene Symbol	Expression Level
PARP3	7.706061643	CENPE	5.047042347
AZGP1	12.80261593	CCNB1	9.559859894
EPHX2	4.993816896	KIFC1	6.711240139
IGFBP4	10.79447333	CCT6A	9.205403494
NUDT18	9.07085503	EIF2C2	8.538651152
FMO5	7.532417562	RAD54B	4.523797903
C1orf66	8.820325116	VDAC2	12.01035138
COL14A1	6.679366713	MCM10	5.446321834
PLAT	11.65087922	ZWINT	11.22262799
PCM1	11.07051999	KIF18A	3.237846496
ZBTB20	8.711204359	RACGAP1	9.157539202
NKFB1	11.27566382	TDG	8.564709433
TK2	9.063859097	NUP107	9.936110469
ABAT	9.086053214	TMPO	8.40781558
ACP6	9.703784979	XPOT	8.679222508
TSPAN7	9.435145555	BIRC5	8.666361558
TNFRSF10B	5.94832483	TOP2A	8.640228015
GSTM1	9.75245794	DSC2	7.280523855
OSBPL1A	9.601367587	EIF2S2	8.042112414
KCTD9	7.885565166	UBE2C	10.55005182
EVL	12.93028836	TPX2	9.792737142
MAP2K4	10.1175172	C20orf24	11.34355343
RPL21	15.49653705	KIF4A	8.988270499
STC2	11.67771198		

*missing gene symbols are ZNF18, PHYHD1, CHDH, which are sensitivity genes, and CDC2, CDCA5, C8orf76, FBXO45, which are resistance genes. These probes were not included in the PAM50 study.

Analyzing the data with the methods of the present teachings, categorizes this patient as low risk. This patient exhibited a relapse-free survival time of 13.28 years.

Example 7

[0094] This example illustrates a patient classified in the indeterminate group using the PAM50 study can be better characterized using the CADER gene expression signature of the present teachings.

[0095] In this example, patient was diagnosed at age 82.6 as grade 1 node negative with a tumor size of 2.5 cm. Gene expression profile of patient's CADER gene signature is presented in table 7.

TABLE 7

Endocrine Therapy Sensitivity Genes		Endocrine Therapy Resistance Genes	
Gene Symbol	Expression Level	Gene Symbol	Expression Level
PARP3	8.174546595	CENPE	5.183835158
AZGP1	13.16491313	CCNB1	9.329909721
EPHX2	8.94232765	KIFC1	8.159754674
IGFBP4	10.73512082	CCT6A	10.11615574
NUDT18	7.614608355	EIF2C2	6.716000941
FMO5	9.016646233	RAD54B	6.687388038
C1orf66	9.343330199	VDAC2	12.02040261

TABLE 7-continued

Endocrine Therapy Sensitivity Genes		Endocrine Therapy Resistance Genes	
Gene Symbol	Expression Level	Gene Symbol	Expression Level
COL14A1	5.412112391	MCM10	4.450809873
PLAT	9.611437635	ZWINT	10.05941182
PCM1	11.00268588	KIF18A	6.517618437
ZBTB20	8.412640663	RACGAP1	9.053757653
NKFB1	10.31368648	TDG	8.283186412
TK2	9.063293162	NUP107	10.06027055
ABAT	11.24702673	TMPO	8.534868246
ACP6	10.6358907	XPOT	8.725274164
TSPAN7	7.772079521	BIRC5	8.690569453
TNFRSF10B	7.675838903	TOP2A	9.108931542
GSTM1	9.794034203	DSC2	5.869174656
OSBPL1A	9.989288869	EIF2S2	8.030215231
KCTD9	8.509371583	UBE2C	9.983460223
EVL	12.56118174	TPX2	9.441747358
MAP2K4	10.41218633	C20orf24	11.19135574
RPL21	15.08960134	KIF4A	9.086006485
STC2	10.7705123		

*missing gene symbols are ZNF18, PHYHD1, CHDH, which are sensitivity genes, and CDC2, CDCA5, C8orf76, FBXO45, which are resistance genes. These probes were not included in the PAM50 study.

Analyzing the data with the methods of the present teachings, categorizes this patient as low risk.

This patient exhibited a relapse-free survival time of 4.62 years.

Example 8

[0096] This example illustrates a patient classified in the indeterminate group using the PAM50 study can be better characterized using the CADER gene expression signature of the present teachings.

[0097] In this example, patient was diagnosed at age 50 as grade 1 node negative with a tumor size of 2 cm. Gene expression profile of patient's CADER gene signature is presented in table 8.

TABLE 8

Endocrine Therapy Sensitivity Genes		Endocrine Therapy Resistance Genes	
Gene Symbol	Expression Level	Gene Symbol	Expression Level
PARP3	8.423019389	CENPE	5.208923128
AZGP1	12.14689386	CCNB1	9.067919062
EPHX2	7.179973326	KIFC1	7.803930949
IGFBP4	10.96270429	CCT6A	10.10034748
NUDT18	8.093034532	EIF2C2	8.355983071
FMO5	8.509914885	RAD54B	5.578315416
C1orf66	9.268922232	VDAC2	11.98112025
COL14A1	7.402107354	MCM10	5.096041201
PLAT	10.2412839	ZWINT	9.400614412
PCM1	10.80954268	KIF18A	4.320711476
ZBTB20	8.216998421	RACGAP1	8.426501711
NKFB1	10.37867582	TDG	8.424581655
TK2	8.642152449	NUP107	10.34239592
ABAT	10.99556805	TMPO	8.238047033
ACP6	9.716986412	XPOT	9.722447929
TSPAN7	8.5971143	BIRC5	8.154255818
TNFRSF10B	7.789496624	TOP2A	8.426551678
GSTM1	9.07138847	DSC2	7.916892991
OSBPL1A	9.709580369	EIF2S2	8.062037251
KCTD9	8.12069555	UBE2C	9.351723036

TABLE 8-continued

Endocrine Therapy Sensitivity Genes		Endocrine Therapy Resistance Genes	
Gene Symbol	Expression Level	Gene Symbol	Expression Level
EVL	11.57919319	TPX2	8.857336669
MAP2K4	9.476622768	C20orf24	11.54843739
RPL21	14.8847084	KIF4A	7.999559725
STC2	11.89892093		

*missing gene symbols are ZNF18, PHYHD1, CHDH, which are sensitivity genes, and CDC2, CDCA5, C8orf76, FBXO45, which are resistance genes. These probes were not included in the PAM50 study.

Analyzing the data with the methods of the present teachings, categorizes this patient as low risk.

This patient exhibited a relapse-free survival time of 9.48 years.

Example 9

[0098] This example illustrates a patient classified in the indeterminate group using the PAM50 study can be better characterized using the CADER gene expression signature of the present teachings.

[0099] In this example, patient was diagnosed at age 72 as grade 2 node negative with a tumor size of 2.5 cm. Gene expression profile of patient's CADER gene signature is presented in table 9.

TABLE 9

Endocrine Therapy Sensitivity Genes		Endocrine Therapy Resistance Genes	
Gene Symbol	Expression Level	Gene Symbol	Expression Level
PARP3	8.771670864	CENPE	3.651962054
AZGP1	14.12907741	CCNB1	8.842648054
EPHX2	8.224530958	KIFC1	9.934962727
IGFBP4	13.25201221	CCT6A	8.541236904
NUDT18	9.132402527	EIF2C2	7.812369431
FMO5	8.573554651	RAD54B	3.771356866
C1orf66	10.38687407	VDAC2	11.483336871
COL14A1	6.226066377	MCM10	6.289920626
PLAT	9.894345609	ZWINT	9.856885203
PCMI	6.610539309	KIF18A	4.323664316
ZBTB20	9.658834161	RACGAP1	8.678725078
NKFB1	9.515187228	TDG	8.78362627
TK2	9.00909589	NUP107	9.291523701
ABAT	8.774114776	TMPO	8.070476677
ACP6	10.57558001	XPOT	8.035070874
TSPAN7	9.544470732	BIRC5	9.867229559
TNFRSF10B	5.75209336	TOP2A	8.268887116
GSTM1	10.61241092	DSC2	8.0597748
OSBPL1A	9.063677782	EIF2S2	7.677085789
KCTD9	6.62967452	UBE2C	11.33116967
EVL	12.21472727	TPX2	9.862771273
MAP2K4	7.983384073	C20orf24	12.76892279
RPL21	13.50547562	KIF4A	8.868607027
STC2	10.77093214		

*missing gene symbols are ZNF18, PHYHD1, CHDH, which are sensitivity genes, and CDC2, CDCA5, C8orf76, FBXO45, which are resistance genes. These probes were not included in the PAM50 study.

Analyzing the data with the methods of the present teachings, categorizes this patient as low risk.

This patient exhibited a relapse-free survival time of 10.37 years.

Example 10

[0100] This example illustrates a patient classified in the indeterminate group using the PAM50 study can be better characterized using the CADER gene expression signature of the present teachings.

[0101] In this example, patient was diagnosed at age 60 as grade 1 node negative with a tumor size of 1.5 cm. Gene expression profile of patient's CADER gene signature is presented in the table 10.

TABLE 10

Endocrine Therapy Sensitivity Genes		Endocrine Therapy Resistance Genes	
Gene Symbol	Expression Level	Gene Symbol	Expression Level
PARP3	8.195331371	CENPE	5.632172111
AZGP1	13.74984022	CCNB1	8.055483336
EPHX2	6.696227011	KIFC1	6.489111331
IGFBP4	12.09832399	CCT6A	10.38135864
NUDT18	8.270420346	EIF2C2	8.755586257
FMO5	7.021118002	RAD54B	6.958867796
C1orf66	9.662189619	VDAC2	11.30180572
COL14A1	7.293557331	MCM10	5.917221042
PLAT	9.920697333	ZWINT	9.7205269
PCMI	10.02811491	KIF18A	3.444838554
ZBTB20	10.19466269	RACGAP1	8.419747507
NKFB1	9.603847806	TDG	9.456320243
TK2	8.924649251	NUP107	9.984285983
ABAT	8.896633344	TMPO	7.949108266
ACP6	9.285473956	XPOT	9.54292892
TSPAN7	8.695560913	BIRC5	7.063289261
TNFRSF10B	6.320138873	TOP2A	7.086963896
GSTM1	9.681219679	DSC2	8.003530478
OSBPL1A	9.970328855	EIF2S2	7.436955491
KCTD9	7.911145356	UBE2C	9.291612864
EVL	12.0387619	TPX2	8.426273521
MAP2K4	8.50845927	C20orf24	11.48997945
RPL21	14.66438421	KIF4A	6.462304872
STC2	10.34574607		

*missing gene symbols are ZNF18, PHYHD1, CHDH, which are sensitivity genes, and CDC2, CDCA5, C8orf76, FBXO45, which are resistance genes. These probes were not included in the PAM50 study.

Analyzing the data with the methods of the present teachings, categorizes this patient as low risk.

This patient exhibited a relapse-free survival time of 9.82 years.

Example 11

[0102] This example illustrates a patient classified in the indeterminate group using the PAM50 study can be better characterized using the CADER gene expression signature of the present teachings.

[0103] In this example, patient was diagnosed at age 76 as grade 2 node negative with a tumor size of 2 cm. Gene expression profile of patient's CADER gene signature is presented in table 11.

TABLE 11

Endocrine Therapy Sensitivity Genes		Endocrine Therapy Resistance Genes	
Gene Symbol	Expression Level	Gene Symbol	Expression Level
PARP3	9.220276473	CENPE	4.890147366
AZGP1	13.63396186	CCNB1	9.357511666
EPHX2	7.63440817	KIFC1	9.213362515
IGFBP4	10.90988711	CCT6A	8.961784315
NUDT18	9.043535413	EIF2C2	8.739433283
FMO5	7.432979371	RAD54B	6.007633509
C1orf66	9.643784067	VDAC2	11.81497055
COL14A1	7.599356611	MCM10	6.617340391
PLAT	11.32894871	ZWINT	10.78246017
PCMI	7.474273878	KIF18A	5.558831023
ZBTB20	9.525264933	RACGAP1	8.939562764

TABLE 11-continued

Endocrine Therapy Sensitivity Genes		Endocrine Therapy Resistance Genes	
Gene Symbol	Expression Level	Gene Symbol	Expression Level
NKFB1	9.83374884	TDG	8.734711926
TK2	8.840877327	NUP107	9.38846082
ABAT	10.29856415	TMPO	8.103172514
ACP6	10.5667799	XPOT	8.466124368
TSPAN7	8.74103966	BIRC5	9.011353969
TNFRSF10B	7.94094245	TOP2A	8.059448642
GSTM1	11.16294174	DSC2	6.733968514
OSBPL1A	9.990399182	EIF2S2	7.133801494
KCTD9	7.503238991	UBE2C	10.34231341
EVL	9.296777305	TPX2	8.956665888
MAP2K4	8.788801129	C20orf24	12.14857435
RPL21	13.81407231	KIF4A	7.816111893
STC2	12.93997443		

*missing gene symbols are ZNF18, PHYHD1, CHDH, which are sensitivity genes, and CDC2, CDCA5, C8orf76, FBXO45, which are resistance genes. These probes were not included in the PAM50 study.

Analyzing the data with the methods of the present teachings, categorizes this patient as low risk.

This patient exhibited a relapse-free survival time of 8.82 years.

Example 12

[0104] This example illustrates a patient classified in the indeterminate group using the PAM50 study can be better characterized using the CADER gene expression signature of the present teachings.

[0105] In this example, patient was diagnosed at age 71 as grade 2 node negative with a tumor size of 3.8 cm. Gene expression profile of patient's CADER gene signature is presented in table 12.

TABLE 12

Endocrine Therapy Sensitivity Genes		Endocrine Therapy Resistance Genes	
Gene Symbol	Expression Level	Gene Symbol	Expression Level
PARP3	7.225232241	CENPE	5.356683467
AZGP1	11.10551416	CCNB1	8.69014881
EPHX2	7.608820719	KIFC1	6.627439879
IGFBP4	10.14052865	CCT6A	9.503117742
NUDT18	8.790224261	EIF2C2	8.276676063
FMO5	8.352492368	RAD54B	7.296602326
C1orf66	9.095903836	VDAC2	12.07803136
COL14A1	6.801220806	MCM10	4.90426628
PLAT	12.1254784	ZWINT	9.963178365
PCM1	10.80643214	KIF18A	5.297509956
ZBTB20	8.655693668	RACGAP1	8.675716832
NKFB1	9.950598064	TDG	8.856305995
TK2	8.142178994	NUP107	9.825879761
ABAT	12.07425458	TMPO	7.898770909
ACP6	9.934738407	XPOT	9.409422485
TSPAN7	8.615270886	BIRC5	7.920768251
TNFRSF10B	5.930584997	TOP2A	8.274852202
GSTM1	10.48712907	DSC2	7.740213072
OSBPL1A	9.748346575	EIF2S2	7.64317594
KCTD9	7.917730095	UBE2C	9.971378017
EVL	11.05681921	TPX2	8.827280345
MAP2K4	9.304427564	C20orf24	11.53656485
RPL21	14.34440973	KIF4A	7.655959994
STC2	12.86487322		

*missing gene symbols are ZNF18, PHYHD1, CHDH, which are sensitivity genes, and CDC2, CDCA5, C8orf76, FBXO45, which are resistance genes. These probes were not included in the PAM50 study.

Analyzing the data with the methods of the present teachings, categorizes this patient as low risk.

This patient exhibited a relapse-free survival time of 9.77 years.

Example 13

[0106] This example illustrates a patient classified in the indeterminate group using the PAM50 study can be better characterized using the CADER gene expression signature of the present teachings.

[0107] In this example, patient was diagnosed at age 71 as grade 2 node negative with a tumor size of 1.1 cm. Gene expression profile of patient's CADER gene signature is presented in table 13.

TABLE 13

Endocrine Therapy Sensitivity Genes		Endocrine Therapy Resistance Genes	
Gene Symbol	Expression Level	Gene Symbol	Expression Level
PARP3	9.291704969	CENPE	5.382882804
AZGP1	12.78955459	CCNB1	8.440426299
EPHX2	9.635858316	KIFC1	6.829062874
IGFBP4	11.53492614	CCT6A	9.324394803
NUDT18	8.580021659	EIF2C2	8.891052037
FMO5	9.367852626	RAD54B	5.385472494
C1orf66	9.531665745	VDAC2	11.42239554
COL14A1	7.198780142	MCM10	6.408723154
PLAT	8.965633637	ZWINT	10.00026781
PCM1	11.73299647	KIF18A	3.071083725
ZBTB20	9.995356409	RACGAP1	9.064077065
NKFB1	10.39137003	TDG	8.955158771
TK2	8.610248982	NUP107	9.991926076
ABAT	10.16325203	TMPO	8.339618599
ACP6	9.899745943	XPOT	9.205077535
TSPAN7	8.232730392	BIRC5	8.003442603
TNFRSF10B	8.125270272	TOP2A	8.044071277
GSTM1	9.57469389	DSC2	5.813682345
OSBPL1A	9.742077303	EIF2S2	7.924900627
KCTD9	8.122019716	UBE2C	9.793971887
EVL	12.81661697	TPX2	8.571855639
MAP2K4	8.464554411	C20orf24	11.58041449
RPL21	13.78632737	KIF4A	7.9808711
STC2	9.597783917		

*missing gene symbols are ZNF18, PHYHD1, CHDH, which are sensitivity genes, and CDC2, CDCA5, C8orf76, FBXO45, which are resistance genes. These probes were not included in the PAM50 study.

Analyzing the data with the methods of the present teachings, categorizes this patient as low risk.

This patient exhibited a relapse-free survival time of 11.03 years.

Example 14

[0108] This example illustrates a patient classified in the indeterminate group using the PAM50 study can be better characterized using the CADER gene expression signature of the present teachings.

[0109] In this example, patient was diagnosed at age 64 as grade 2 node negative with a tumor size of 4 cm. Gene expression profile of patient's CADER gene signature is presented in table 14.

TABLE 14

Endocrine Therapy Sensitivity Genes		Endocrine Therapy Resistance Genes	
Gene Symbol	Expression Level	Gene Symbol	Expression Level
PARP3	8.672237007	CENPE	5.698169245
AZGP1	10.03974419	CCNB1	8.499274857
EPHX2	7.997469912	KIFC1	8.528740811
IGFBP4	9.855627665	CCT6A	9.52592378
NUDT18	8.405623241	EIF2C2	8.373179934
FMO5	9.240328855	RAD54B	6.843287473
C1orf66	8.995817157	VDAC2	11.54992641
COL14A1	7.932292908	MCM10	4.90418841
PLAT	8.852188372	ZWINT	10.28260367
PCM1	11.08708954	KIF18A	6.428181192
ZBTB20	9.793639913	RACGAP1	9.049262721
NKFB1	9.967037219	TDG	9.118005266
TK2	8.642951231	NUP107	9.94434022
ABAT	9.276640765	TMPO	8.588766178
ACP6	10.29122674	XPOT	9.116196563
TSPAN7	7.719768947	BIRC5	8.143036369
TNFRSF10B	7.640641107	TOP2A	8.619855173
GSTM1	9.281695426	DSC2	7.808699225
OSBPL1A	10.05216708	EIF2S2	7.959857094
KCTD9	8.239843842	UBE2C	9.996023676
EVL	11.57660733	TPX2	8.505614443
MAP2K4	8.738524985	C20orf24	11.67011271
RPL21	15.28974011	KIF4A	7.810522036
STC2	11.64642431		

*missing gene symbols are ZNF18, PHYHD1, CHDH, which are sensitivity genes, and CDC2, CDCA5, C8orf76, FBXO45, which are resistance genes. These probes were not included in the PAM50 study.

Analyzing the data with the methods of the present teachings, categorizes this patient as low risk.

This patient exhibited a relapse-free survival time of 9.45 years.

Example 15

[0110] This example illustrates a patient classified in the indeterminate group using the PAM50 study can be better characterized using the CADER gene expression signature of the present teachings.

[0111] In this example, patient was diagnosed at age 62 as grade 1 node negative with a tumor size of 2 cm. Gene expression profile of patient's CADER gene signature is presented in table 15.

TABLE 15

Endocrine Therapy Sensitivity Genes		Endocrine Therapy Resistance Genes	
Gene Symbol	Expression Level	Gene Symbol	Expression Level
PARP3	7.95404528	CENPE	5.889816181
AZGP1	12.96281502	CCNB1	8.977058202
EPHX2	3.925829388	KIFC1	6.860790579
IGFBP4	13.98951479	CCT6A	10.07424594
NUDT18	7.342338206	EIF2C2	8.819670918
FMO5	8.755710391	RAD54B	6.850474828
C1orf66	8.502083292	VDAC2	10.70361673
COL14A1	6.885825359	MCM10	4.556044807
PLAT	8.958129179	ZWINT	9.90352554
PCM1	9.263851333	KIF18A	2.43819653
ZBTB20	8.760094598	RACGAP1	8.91534784
NKFB1	9.944393215	TDG	9.143939972
TK2	8.550001609	NUP107	10.22940838
ABAT	10.65823825	TMPO	8.625364575
ACP6	9.717129716	XPOT	10.04425538
TSPAN7	8.234606874	BIRC5	8.244907696
TNFRSF10B	6.783398571	TOP2A	9.529961049

TABLE 15-continued

Endocrine Therapy Sensitivity Genes		Endocrine Therapy Resistance Genes	
Gene Symbol	Expression Level	Gene Symbol	Expression Level
GSTM1	10.27668464	DSC2	7.958312793
OSBPL1A	11.07866444	EIF2S2	7.901577226
KCTD9	7.495327704	UBE2C	10.12534313
EVL	11.12621928	TPX2	9.347041926
MAP2K4	8.92875982	C20orf24	12.26651445
RPL21	14.3166023	KIF4A	7.967112657
STC2	14.76346489		

*missing gene symbols are ZNF18, PHYHD1, CHDH, which are sensitivity genes, and CDC2, CDCA5, C8orf76, FBXO45, which are resistance genes. These probes were not included in the PAM50 study.

Analyzing the data with the methods of the present teachings, categorizes this patient as low risk.

This patient exhibited a relapse-free survival time of 9.4 years.

Example 16

[0112] This example refers to examples 5-15 of patients that were classified in the indeterminate group using the PAM50 study can be better characterized using the CADER gene expression signature of the present teachings.

[0113] In the Symmans dataset, twelve patients were classified as medium risk by PAM50 but low risk by CADER. Relapse free survival was observed in 11 out of the 12 patients that were re-characterized by CADER therefore the present teaching are able to predict relapse free survival.

Example 17

[0114] This example illustrates a patient classified in the low risk group using the PAM50 study can be better characterized using the CADER gene expression signature of the present teachings.

[0115] In this example, patient was diagnosed at age 61 as grade 2 node negative with a tumor size of 2.2 cm. Gene expression profile of patient's CADER gene signature is presented in table 16.

TABLE 16

Endocrine Therapy Sensitivity Genes		Endocrine Therapy Resistance Genes	
Gene Symbol	Expression Level	Gene Symbol	Expression Level
PARP3	7.744600437	CENPE	7.544588013
AZGP1	10.66904972	CCNB1	9.47591913
EPHX2	4.805292308	KIFC1	9.506767063
IGFBP4	11.29608728	CCT6A	10.21427538
NUDT18	8.002058823	EIF2C2	8.7960344
FMO5	6.155200313	RAD54B	6.375895604
C1orf66	9.333179208	VDAC2	12.00687248
COL14A1	6.288615109	MCM10	7.501949976
PLAT	9.537949138	ZWINT	10.95987061
PCM1	9.588582125	KIF18A	6.051795069
ZBTB20	8.790479168	RACGAP1	9.24241408
NKFB1	9.725030872	TDG	9.575761169
TK2	8.531978461	NUP107	10.32938969
ABAT	8.159354409	TMPO	8.790588323
ACP6	9.584543206	XPOT	10.49669192
TSPAN7	8.693409574	BIRC5	9.336064812
TNFRSF10B	6.091732191	TOP2A	9.421322801
GSTM1	9.06286858	DSC2	7.776095411
OSBPL1A	9.151000584	EIF2S2	8.190102297
KCTD9	7.87786112	UBE2C	10.78982172

TABLE 16-continued

Endocrine Therapy Sensitivity Genes		Endocrine Therapy Resistance Genes	
Gene Symbol	Expression Level	Gene Symbol	Expression Level
EVL	10.55251978	TPX2	10.15418118
MAP2K4	8.27281105	C20orf24	11.90394725
RPL21	13.95732984	KIF4A	8.570767398
STC2	9.01194817		

*missing gene symbols are ZNF18, PHYHD1, CHDH, which are sensitivity genes, and CDC2, CDCA5, C8orf76, FBXO45, which are resistance genes. These probes were not included in the PAM50 study.

Analyzing the data with the methods of the present teachings, categorizes this patient as resistant thus high risk for relapse. This patient exhibited distant relapse and had survived without distant relapse for 6.98 years.

Example 18

[0116] This example illustrates a patient classified in the low risk group using the PAM50 study can be better characterized using the CADER gene expression signature of the present teachings.

[0117] In this example, patient was diagnosed at age 53 as grade 2 node positive with a tumor size of 3.5 cm. Gene expression profile of patient's CADER gene signature is presented in table 17.

TABLE 17

Endocrine Therapy Sensitivity Genes		Endocrine Therapy Resistance Genes	
Gene Symbol	Expression Level	Gene Symbol	Expression Level
PARP3	6.804051671	CENPE	5.37205207
AZGP1	10.39856245	CCNB1	8.991964499
EPHX2	5.513231806	KIFC1	6.771636713
IGFBP4	11.7797415	CCT6A	10.3483913
NUDT18	7.862417652	EIF2C2	8.904665998
FMO5	5.658509257	RAD54B	7.079699025
C1orf66	8.564056693	VDAC2	13.68322287
COL14A1	8.03407683	MCM10	6.122997443
PLAT	10.11372685	ZWINT	9.949184652
PCMI	9.443642359	KIF18A	6.485956244
ZBTB20	8.531888877	RACGAP1	8.632956402
NKFB1	10.66976642	TDG	8.135705715
TK2	8.928895236	NUP107	10.29069575
ABAT	8.16839595	TMPO	7.526540447
ACP6	9.360656124	XPOT	9.91958533
TSPAN7	8.640596844	BIRC5	7.847795729
TNFRSF10B	6.051866381	TOP2A	8.010053062
GSTM1	9.84184812	DSC2	8.152131803
OSBPL1A	9.022350499	EIF2S2	8.122990969
KCTD9	8.251784271	UBE2C	10.09858581
EVL	11.45450604	TPX2	9.211925163
MAP2K4	8.798858799	C20orf24	12.24436801
RPL21	14.78763383	KIF4A	8.680433487
STC2	11.53819169		

*missing gene symbols are ZNF18, PHYHD1, CHDH, which are sensitivity genes, and CDC2, CDCA5, C8orf76, FBXO45, which are resistance genes. These probes were not included in the PAM50 study.

Analyzing the data with the methods of the present teachings, categorizes this patient as resistant thus high risk for relapse. This patient exhibited distant relapse and had survived without distant relapse for 5.22 years.

Example 19

[0118] This example illustrates a patient classified in the low risk group using the PAM50 study can be better characterized using the CADER gene expression signature of the present teachings.

[0119] In this example, patient was diagnosed at age 68 as grade 1 node positive with a tumor size of 9.9 cm. Gene expression profile of patient's CADER gene signature is presented in table 18.

TABLE 18

Endocrine Therapy Sensitivity Genes		Endocrine Therapy Resistance Genes	
Gene Symbol	Expression Level	Gene Symbol	Expression Level
PARP3	7.941656208	CENPE	5.820982523
AZGP1	11.91844546	CCNB1	9.080828313
EPHX2	11.09221285	KIFC1	8.443053537
IGFBP4	11.09921988	CCT6A	9.912108147
NUDT18	7.291000984	EIF2C2	9.014789327
FMO5	5.507258787	RAD54B	7.373821752
C1orf66	8.052387123	VDAC2	12.24316711
COL14A1	6.619255837	MCM10	5.481657234
PLAT	9.179447346	ZWINT	9.928994375
PCMI	9.999879743	KIF18A	7.056975017
ZBTB20	8.664983154	RACGAP1	9.481396294
NKFB1	9.962166703	TDG	8.90556312
TK2	8.363256706	NUP107	10.45249963
ABAT	8.00208168	TMPO	7.768463425
ACP6	9.287822071	XPOT	9.563085024
TSPAN7	8.75268169	BIRC5	8.48871999
TNFRSF10B	7.582667467	TOP2A	9.319611162
GSTM1	10.13714896	DSC2	6.847939442
OSBPL1A	10.21907084	EIF2S2	8.340508305
KCTD9	8.544638002	UBE2C	9.971599409
EVL	10.3354868	TPX2	9.405812825
MAP2K4	7.800937453	C20orf24	12.00273341
RPL21	14.15711663	KIF4A	8.013343028
STC2	10.27067709		

*missing gene symbols are ZNF18, PHYHD1, CHDH, which are sensitivity genes, and CDC2, CDCA5, C8orf76, FBXO45, which are resistance genes. These probes were not included in the PAM50 study.

Analyzing the data with the methods of the present teachings, categorizes this patient as resistant thus high risk for relapse. This patient exhibited distant relapse and had survived without distant relapse for 4.66 years.

Example 20

[0120] This example illustrates a patient classified in the low risk group using the PAM50 study can be better characterized using the CADER gene expression signature of the present teachings.

[0121] In this example, patient was diagnosed at age 66 as grade 2 node negative with a tumor size of 4 cm. Gene expression profile of patient's CADER gene signature is presented in table 19.

TABLE 19

Endocrine Therapy Sensitivity Genes		Endocrine Therapy Resistance Genes	
Gene Symbol	Expression Level	Gene Symbol	Expression Level
PARP3	8.575552586	CENPE	5.702899308
AZGP1	11.37810078	CCNB1	9.954936246
EPHX2	5.625112756	KIFC1	7.746900849
IGFBP4	11.49885025	CCT6A	9.318846576
NUDT18	8.252384776	EIF2C2	9.173067959
FMO5	5.640726866	RAD54B	6.204679593
C1orf66	9.838671483	VDAC2	12.33336871
COL14A1	7.175991287	MCM10	4.978675499
PLAT	11.14152372	ZWINT	9.799826718
PCMI	8.676624207	KIF18A	5.066342911
ZBTB20	9.359683135	RACGAP1	9.958406158

TABLE 19-continued

Endocrine Therapy Sensitivity Genes		Endocrine Therapy Resistance Genes	
Gene Symbol	Expression Level	Gene Symbol	Expression Level
NKFB1	9.804029895	TDG	9.03871544
TK2	8.627974937	NUP107	9.704097868
ABAT	7.87688799	TMPO	8.42129297
ACP6	10.06691172	XPOT	9.736253402
TSPAN7	8.465600958	BIRC5	8.988490932
TNFRSF10B	5.909433537	TOP2A	9.10676166
GSTM1	12.05894345	DSC2	8.097231854
OSBPL1A	10.15966192	EIF2S2	8.45169494
KCTD9	6.895008503	UBE2C	11.9116952
EVL	12.22035136	TPX2	10.42247756
MAP2K4	8.843494166	C20orf24	13.05330118
RPL21	14.22740117	KIF4A	7.893017097
STC2	12.64230526		

*missing gene symbols are ZNF18, PHYHD1, CHDH, which are sensitivity genes, and CDC2, CDCA5, C8orf76, FBXO45, which are resistance genes. These probes were not included in the PAM50 study.

Analyzing the data with the methods of the present teachings, categorizes this patient as resistant thus high risk for relapse. This patient exhibited distant relapse and had survived without distant relapse for 5.68 years.

Example 21

[0122] This example illustrates a patient classified in the low risk group using the PAM50 study can be better characterized using the CADER gene expression signature of the present teachings.

[0123] In this example, patient was diagnosed at age 61 as grade 3 node positive with a tumor size of 3 cm. Gene expression profile of patient's CADER gene signature is presented in table 20.

TABLE 20

Endocrine Therapy Sensitivity Genes		Endocrine Therapy Resistance Genes	
Gene Symbol	Expression Level	Gene Symbol	Expression Level
PARP3	7.381832762	CENPE	7.085017638
AZGP1	10.64694672	CCNB1	8.638235879
EPHX2	7.549320403	KIFC1	8.129562479
IGFBP4	12.1897795	CCT6A	8.923314956
NUDT18	7.802321466	EIF2C2	8.834816089
FMO5	7.751416609	RAD54B	5.881147478
C1orf66	8.943595771	VDAC2	11.87057155
COL14A1	7.984848322	MCM10	7.072996991
PLAT	10.83283341	ZWINT	9.926258074
PCM1	10.86560731	KIF18A	5.780102567
ZBTB20	10.32743519	RACGAP1	8.843596679
NKFB1	10.14861856	TDG	9.445600595
TK2	8.511326627	NUP107	9.962609964
ABAT	8.19708022	TMPO	8.355612197
ACP6	9.416616338	XPOT	9.200544014
TSPAN7	8.395774951	BIRC5	8.314366606
TNFRSF10B	7.110230031	TOP2A	8.881611607
GSTM1	9.235942407	DSC2	7.863153004
OSBPL1A	9.309367829	EIF2S2	7.712268984
KCTD9	7.720045847	UBE2C	10.07626817
EVL	12.13976416	TPX2	8.850223895
MAP2K4	8.417635977	C20orf24	12.08210918
RPL21	14.25344008	KIF4A	8.257021285
STC2	8.652446485		

*missing gene symbols are ZNF18, PHYHD1, CHDH, which are sensitivity genes, and CDC2, CDCA5, C8orf76, FBXO45, which are resistance genes. These probes were not included in the PAM50 study.

Analyzing the data with the methods of the present teachings, categorizes this patient as resistant thus high risk for relapse. This patient exhibited distant relapse and had survived without distant relapse for 10.8 years.

Example 22

[0124] This example refers to examples 17-21 of patients that were classified in the low risk group using the PAM50 study can be better characterized using the CADER gene expression signature of the present teachings.

[0125] In the Symmans dataset, six patients were classified as low risk for relapse by PAM50 but high risk for relapse by CADER. Distant relapse was observed in 5 out of the 6 patients that were re-characterized by CADER therefore the present teachings are able to predict distant relapse.

All references cited are hereby incorporated by reference, each in its entirety.

What is claimed is:

1. A method of predicting the likelihood of long-term survival without recurrence of cancer for a subject having estrogen receptor-positive (ER+) breast cancer treated with endocrine monotherapy, the method comprising;

a) obtaining a breast cancer tissue sample from a human subject;

b) determining in the sample, expression levels of endocrine therapy sensitivity genes PARP3, AZGP1, EPHX2, IGFBP4, NUDT18, FMO5, C1orf66, COL14A1, PLAT, PCM1, ZBTB20, NFKB1, TK2, ABAT, ACP6, TSPAN7, TNFRSF10B, OSBPL1A, KCTD9, EVL, MAP2K4, RPL21, STC2, ZNF18, PHYHD1 and CHDH, and endocrine therapy resistance genes CENPE, CCNB1, KIFC1, CCT6A, EIF2C2, RAD54B, VDAC2, MCM10, ZWINT, KIF18A, RACGAP1, TDG, NUP107, TMPO, XPOT, BIRC5, TOP2A, DSC2, EIF2S2, UBE2C, TPX2, C20orf24, KIF4A, CDC2, CDCA5, C8orf76 and FBXO45, using a fluorescent barcoded hybridization assay; and

c) assigning the subject to a sensitive, indeterminate or resistant group, wherein assignment to a sensitive group predicts longer relapse-free survival compared to the resistant group, wherein the assigning the subject to a sensitive, indeterminate or resistant group comprises determining the gene centroid of the endocrine therapy sensitivity genes and the gene centroid of the endocrine therapy resistance genes.

2. (canceled)

3. A method in accordance with claim 1, wherein the assigning the subject to a sensitive, indeterminate or resistant, group comprises representing the expression levels as a coordinate in a quadrant in a 2-dimensional space comprising the resistant gene centroid and the sensitive gene centroid, and determining the Euclidean distance of the expression levels to the gene centroid of each of sensitive, resistant and indeterminate response groups, wherein, the subject is assigned to the group with, the shortest distance.

4. A method in accordance with claim 1, wherein assignment to a resistant group indicates shorter relapse free survival.

5. A method in accordance with claim 4, wherein the endocrine monotherapy comprises a therapy selected from the group consisting of tamoxifen treatment and aromatase inhibitor treatment.

6-12. (canceled)

13. A microarray, consisting of:
a solid support;

probes for each gene of the CADER set; and
probes for one or more housekeeping genes.

14. A microarray in accordance with claim **13**, wherein the one or more housekeeping genes are selected from the group consisting of MRPL19, SF3A1 and PUM1.

15. A microarray in accordance with claim **10**, wherein the one or more housekeeping genes are selected from the group consisting of MRPL19, SF3A1, PUM1, ACTB, GAPD, GUSB, RPLP0, and TFRC.

16-21. (canceled)

22. A method in accordance with claim **1**, further comprising determining in the sample, expression: levels of one or more housekeeping genes using a fluorescent barcoded hybridization, assay.

23. A method in accordance with claim **22**, wherein the one or more housekeeping genes are selected from the group consisting of MRPL19, SF3A1 and PUM1.

24. A method in accordance with claim **22**, wherein the one or more housekeeping genes are selected from the group consisting of MRPL19, SF3A1, PUM1, ACTB, GAPD, GUSB, RPLP0, and TFRC.

25. A method of predicting the likelihood of long-term survival without recurrence of cancer for a subject having estrogen, receptor-positive (ER+) breast cancer treated with endocrine monotherapy, the method comprising;

a) obtaining a breast cancer tissue sample from a human subject;

b) determining in the sample, expression levels of endocrine therapy sensitivity genes PARP3, AZGP1, EPHX2, IGFBP4, NUDT18, FMO5, C1orf66, COL14A1, PLAT, PCM1, ZBTB20, NFKB1, TK2, ABAT, ACP6, TSPAN7, TNFRSF10B, OSBPL1A, KCTD9, EVL, MAP2K4, RPL21, STC2, ZNF18, PHYHD1 and CHDH, and endocrine therapy resistance genes CENPE, CCNB1, KIFC1, CCT6A, EIF2C2, RAD54B, VDAC2, MCM10, ZWINT, KIF18A, RACGAP1, TDG, NUP107, TMPO, XPOT, BIRC5, TOP2A, DSC2, EIF2S2, UBE2C, TPX2, C20orf24, KIF4A, CDC2, CDCA5, C8orf76 and FBXO4S, using hybridization, sequencing, or mass spectroscopy analysis of polynucleotides comprised by the sample;

c) scaling the expression levels to have similar distribution of a matching prototype dataset in which patients belong

to a sensitive, an indeterminate or a resistant group based on the centroids of the sensitive genes and the resistance genes; and

d) assigning the subject to a sensitive, indeterminate or resistant group, wherein assignment to a sensitive group predicts longer relapse-free survival compared to the resistant group, wherein the assigning the subject to a sensitive, indeterminate or resistant, group comprises determining the gene centroid of the endocrine therapy sensitivity genes and the gene centroid of the endocrine therapy resistance genes.

26. A method, in accordance with claim **25**, wherein the performing a gene expression profile hybridization comprises performing a quantitative RT-PCR assay.

27. A method in accordance with claim **25**, further comprising providing a microarray consisting of probes for endocrine therapy sensitivity genes PARP3, AZGP1, EPHX2, IGFBP4, NUDT18, FMO5, C1orf66, COL14A1, PLAT, PCM1, ZBTB20, NFKB1, TK2, ABAT, ACP6, TSPAN7, TNFRSF10B, OSBPL1A, KCTD9, EVL, MAP2K4, RPL21, STC2, ZNF18, PHYHD1 and CHDH, and endocrine therapy resistance genes CENPE, CCNB1, KIFC1, CCT6A, EIF2C2, RAD54B, VDAC2, MCM10, ZWINT, KIF18A, RACGAP1, TDG, NUP107, TMPO, XPOT, BIRC5, TOP2A, DSC2, EIF2S2, UBE2C, TPX2, C20orf24, KIF4A, CDC2, CDCA5, C8orf76 and FBXO45, wherein the hybridization comprises performing a microarray hybridization assay.

28. A method in accordance with claim **25**, wherein the assigning the subject to a sensitive, indeterminate or resistant group comprises representing the expression levels as a coordinate in a quadrant in a 2-dimensional space by the resistant gene centroid and the sensitive gene centroid, and determining the Euclidean distance of the expression levels to the gene centroid of each of sensitive, resistant and indeterminate response groups, wherein the subject is assigned to the group with the shortest distance.

29. A method in accordance with claim **25**, wherein assignment to a resistant group indicates shorter relapse free survival.

30. A method in accordance with claim **29**, wherein the endocrine monotherapy comprises a therapy selected from the group consisting of tamoxifen treatment and aromatase inhibitor treatment.

* * * * *